

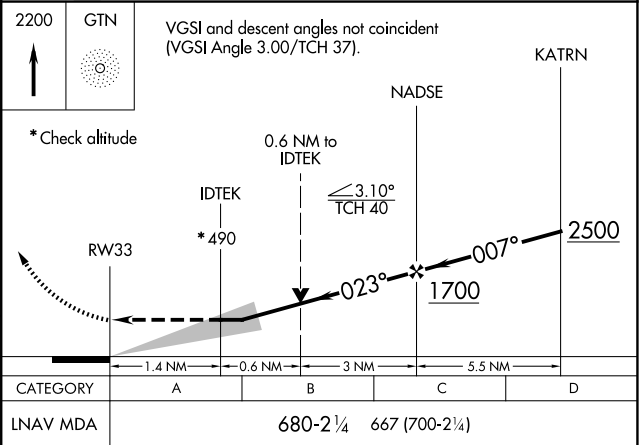
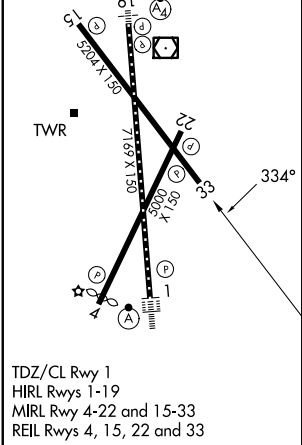
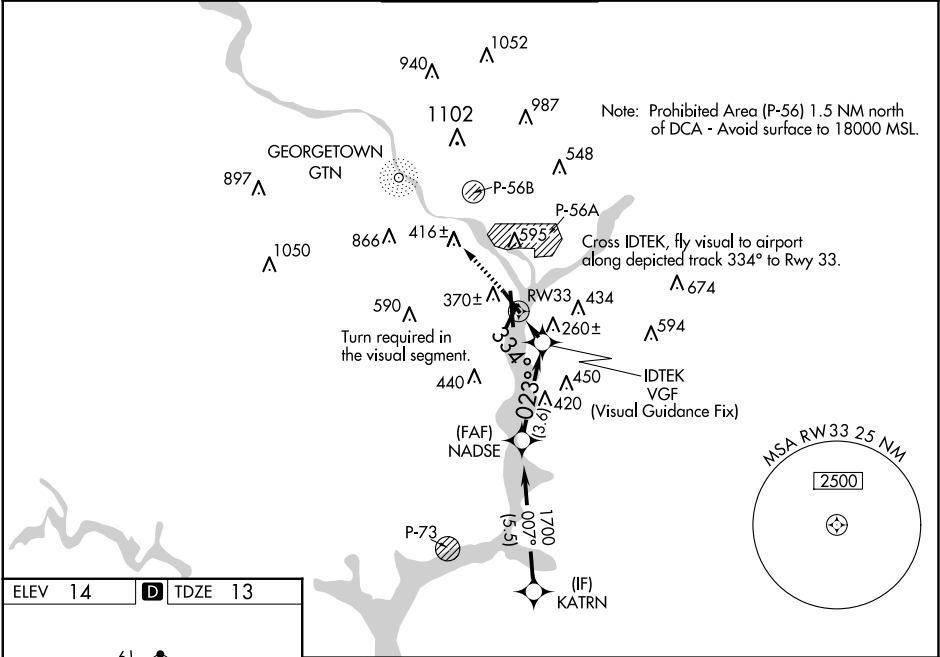
APP CRS	Rwy Ldg	5204
334°	TDZE	13
	Apt Elev	14

RNAV (GPS) RWY 33

RONALD REAGAN WASHINGTON NTL (DCA)

RNP APCH - GPS.	MISSED APPROACH: (Do not exceed 210K until Rwy 33) Climb to 2200 on the FMS lateral path to Rwy 33 and direct to GTN NDB and hold, continue climb-in-hold to 2200.
RADAR required.	

D-ATIS	POTOMAC APP CON	WASHINGTON TOWER	GND CON	CLNC DEL	CPDLC
132.65	119.85 239.25 (WEST/SOUTH) 124.2 360.8 (EAST)	119.1 257.6	121.7 257.6	128.25	



NE-3, 07 AUG 2025 to 04 SEP 2025

NE-3, 07 AUG 2025 to 04 SEP 2025