

NUMMY THREE ARRIVAL

WASHINGTON, DC

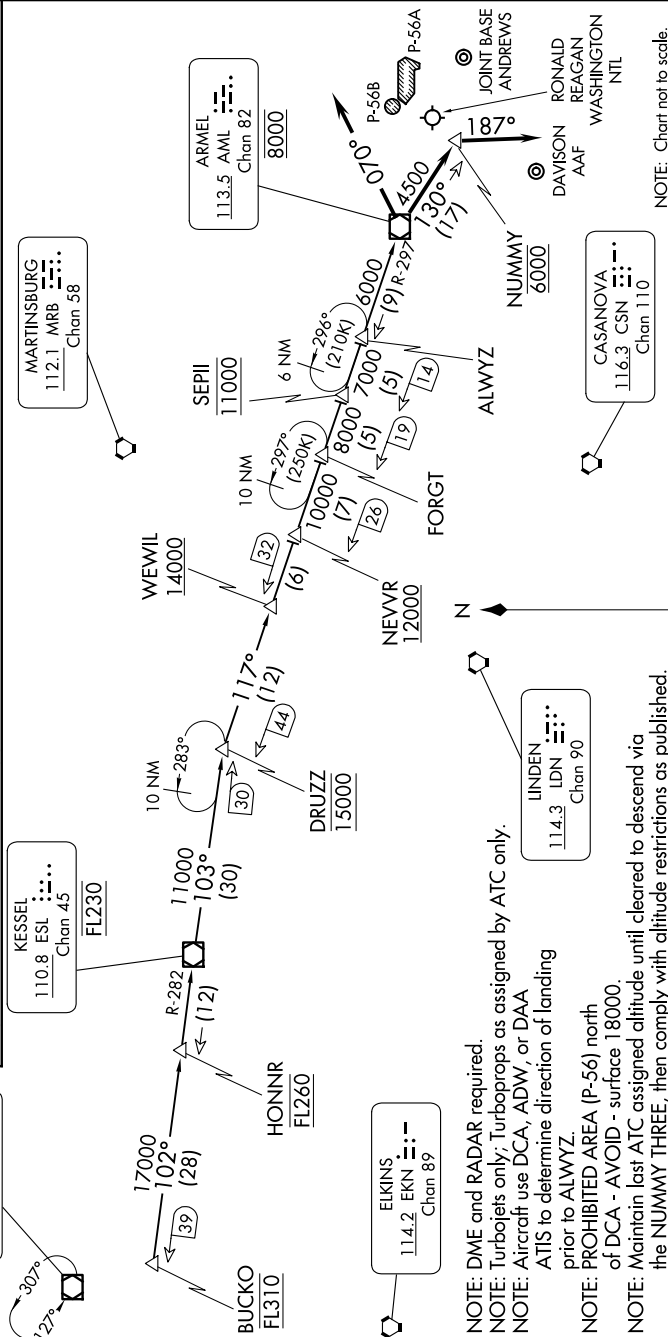
NE-3, 07 AUG 2025 to 04 SEP 2025

ARRIVAL ROUTE DESCRIPTION

From over BUCKO on ESL R-282 to ESL VOR/DME, then on BUCKO TRANSITION (BUCKO NUMMY3) to AML R-103 to DRUZZ, then on AML R-297 to AML VOR/DME.

Landing DCA Rwy's 1, 4, 33, ADW Rwy's 1L, 1R, and DAA: From over AML VOR/DME on AML VOR/DME

Landing DCA Rwy's 15, 19, 22 and ADW Rwy's 19L, 19R: Depart AML VOR/DME on heading 070°, expect radar vectors to final approach course.



NOTE: Chart not to scale.

NE-3, 07 AUG 2025 to 04 SEP 2025

NUMMY THREE ARRIVAL

(AML.NUMMY3) 20JUN19

WASHINGTON, DC