

LOC/DME I-VVWH 111.35 Chan 50 (Y)	APP CRS 147°	Rwy Ldg 6869 TDZE 13 Apt Elev 14
---	------------------------	---

LDA Z RWY 19
RONALD REAGAN WASHINGTON NTL (DCA)

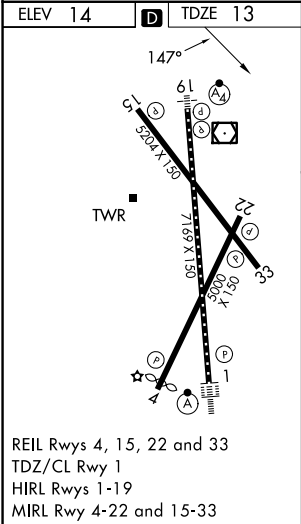
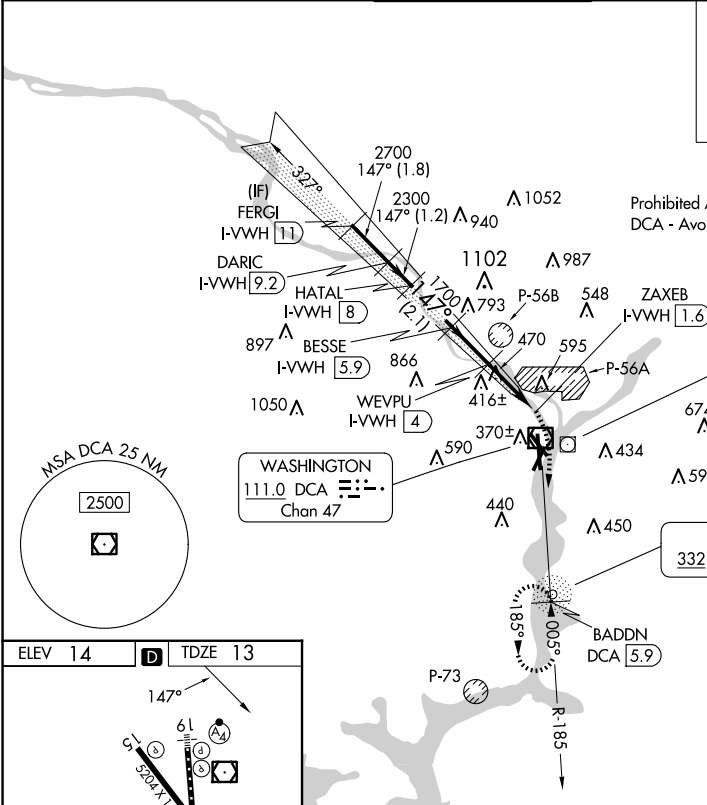
DME required. RADAR required for procedure entry.	MALSF	MISSED APPROACH: Climbing right turn to 3000 on DCA VOR/DME R-185 to BADDN/DCA VOR/DME 5.9 DME and hold, continue climb-in-hold to 3000.
▼ Rwy 19 helicopter visibility reduction below 1 SM NA. ▲ Circling NA northeast of Rwy 15-33. Inop table does not apply.	Ⓜ	

D-ATIS 132.65	POTOMAC APP CON 119.85 239.25 (WEST/SOUTH) 124.2 360.8 (EAST)	WASHINGTON TOWER 119.1 257.6	GND CON 121.7 257.6	CLNC DEL 128.25	CPDLC
-------------------------	---	--	-------------------------------	---------------------------	-------

ALTERNATE MISSED APCH FIX



Prohibited Area (P-56) 1.5 NM north of DCA - Avoid Surface to 18000 MSL.



FERGI I-VVWH 11	DARIC I-VVWH 9.2	HATAL I-VVWH 8	BESSE I-VVWH 5.9	WEVPU I-VVWH 4	ZAXEB I-VVWH 1.6	3000 DCA R-185	BADDN DCA 5.9
3000	2700	2300	1700	1100	3.00° TCH 50		
1.8 NM	1.2 NM	2.1 NM	1.9 NM	2.4 NM	0.9		
CATEGORY	A	B	C	D			
S-19	780/50 767 (800-1)	780/55 767 (800-1)	780-2½ 767 (800-2½)				
CIRCLING	780-1 766 (800-1)	780-1¼ 766 (800-1¼)	840-2½ 826 (900-2½)	900-3 886 (900-3)			

NE-3, 07 AUG 2025 to 04 SEP 2025

NE-3, 07 AUG 2025 to 04 SEP 2025