

LOC/DME I-DCA
109.9
Chan **36**

APP CRS
007°

Rwy Ldg **6869**
TDZE **14**
Apt Elev **14**

ILS or LOC RWY 1

RONALD REAGAN WASHINGTON NTL (DCA)

DME required. RADAR required for procedure entry.

ALSIF-2

MISSED APPROACH: Climb to 420 then climbing left turn to 2200 on DCA VOR/DME R-325 to GTN NDB/INT/DCA 5.9 DME and hold.

D-ATIS
132.65

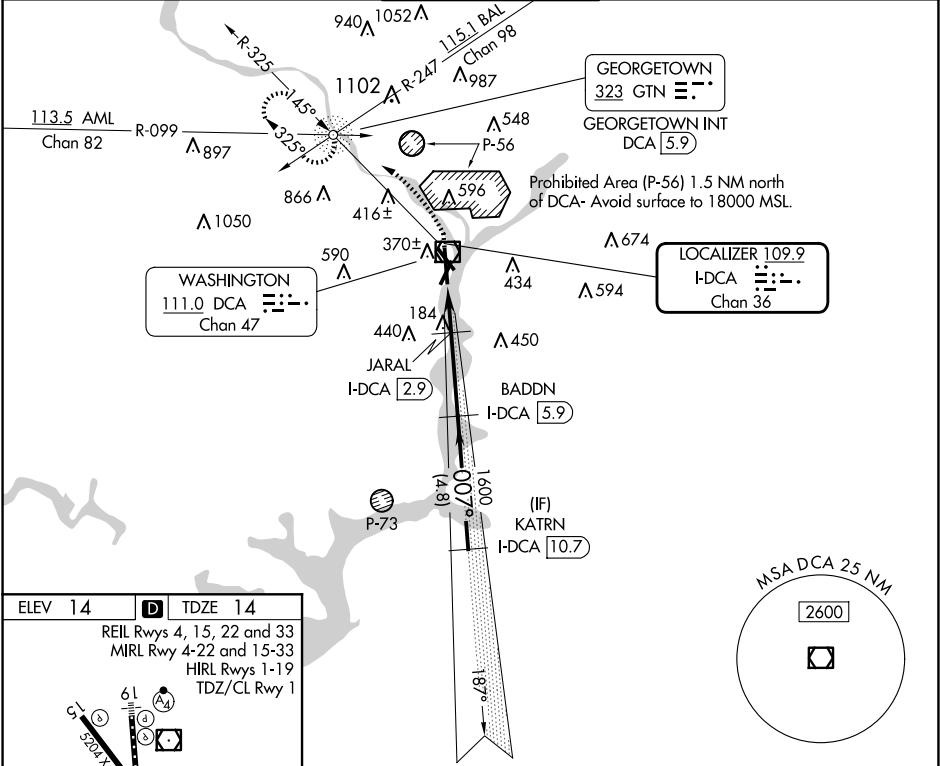
POTOMAC APP CON
119.85 239.25 (WEST/SOUTH)
124.2 360.8 (EAST)

WASHINGTON TOWER
119.1 257.6

GND CON
121.7 257.6

CLNC DEL
128.25

CPDLC



ELEV 14 **D** TDZE 14

REIL Rwys 4, 15, 22 and 33
MIRL Rwy 4-22 and 15-33
HIRL Rwys 1-19
TDZ/CL Rwy 1

FAF to MAP 4.8 NM

Knots	60	90	120	150	180
Min:Sec	4:48	3:12	2:24	1:55	1:36

420 2200 GTN Use I-DCA DME when on the localizer course.

CATEGORY	A	B	C	D
S-ILS 1	214/18 200 (200-½)			
S-LOC 1	480/24	466 (500-½)	480/50	466 (500-1)
CIRCLING	720-1 706 (800-1)	900-1¼ 886 (900-1¼)	900-2¾ 886 (900-2¾)	900-3 886 (900-3)