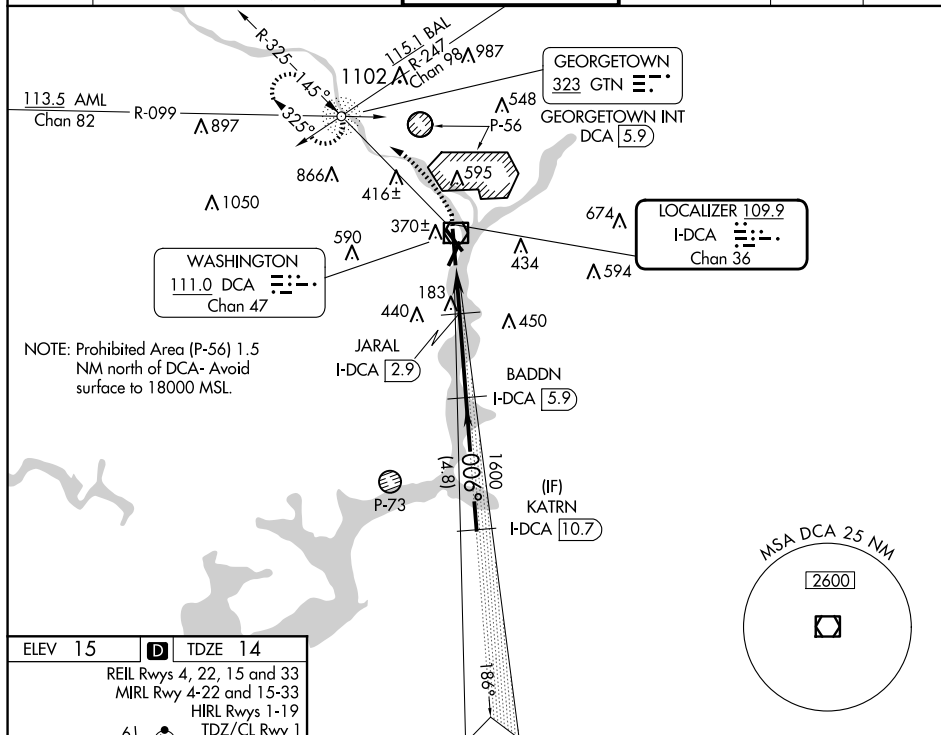


LOC/DME F-DC A	APP CRS	Rwy Ldg 6869
109.9	006°	TDZE 14
Chan 36		Apt Elev 15

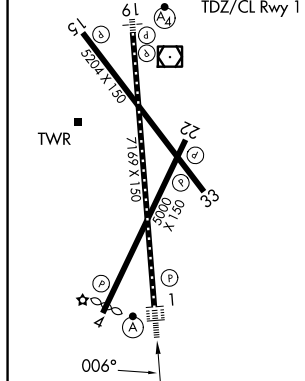
COPTER ILS or LOC/DME RWY 1

RONALD REAGAN WASHINGTON NTL (DCA)

<div><div>NA</div></div>			ALSF-2 <div><div></div></div>		MISSED APPROACH: Climb to 420 then climbing left turn to 2200 on DCA VOR/DME R-325 to GTN NDB/INT/DCA 5.9 DME and hold.			
D-ATIS 132.65	POTOMAC APP CON 119.85 239.25 (WEST/SOUTH) 124.2 360.8 (EAST)		WASHINGTON TOWER 119.1 257.6		GND CON 121.7 257.6		CLNC DEL 128.25	CPDLC



ELEV 15	D	TDZE 14
REIL Rwy 4, 22, 15 and 33		
MIRL Rwy 4-22 and 15-33		
HIRL Rwy 1-19		
61		TDZ/CL Rwy 1



420
↑

2200
DCA R-325

GTN

Use I-DCA DME when on the localizer course.

* LOC only.

I-DCA 1.1

* I-DCA 2.4

JARAL I-DCA 2.9

* 620

BADDN I-DCA 5.9

1600

KATRN I-DCA 10.7

2500

006°

GS 3.00°
HCH 54

1.3 NM 0.5 3 NM 4.8 NM

CATEGORY	COPIER
H-ILS 1	114/12 100 (100-¼)
H-LOC 1	480/24 466 (500-½)
H-ILS 1	CAT II RA 106

**COPTER ILS CATEGORY II - SPECIAL AIRCREW
& AIRCRAFT CERTIFICATION REQUIRED**