

TACAN Y RWY 33

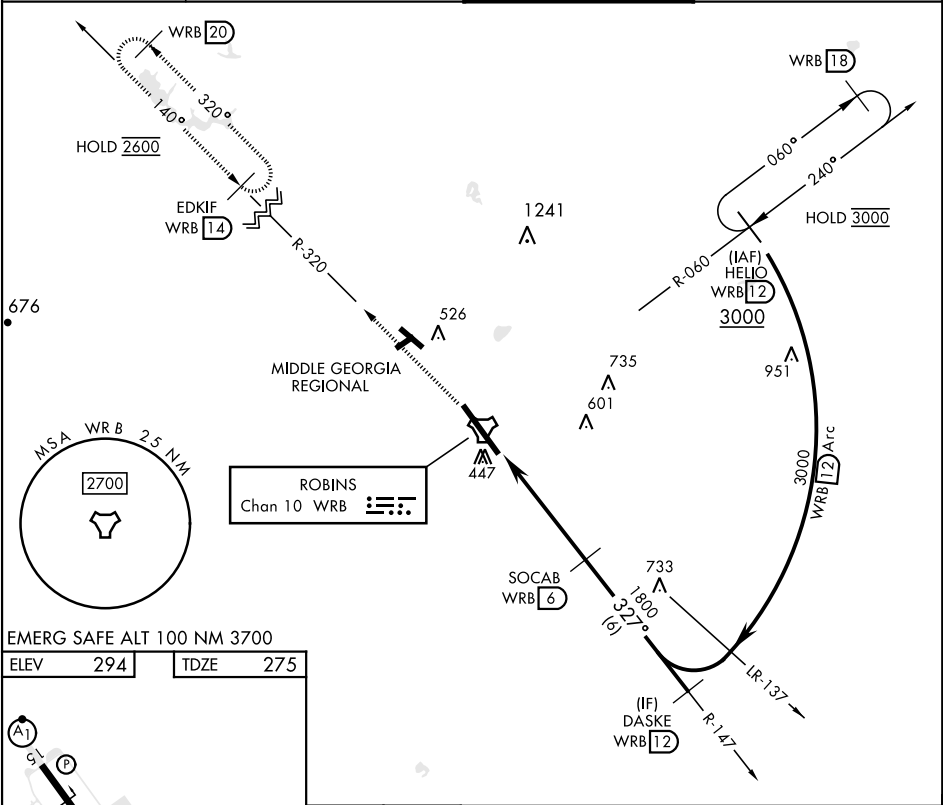
TACAN	WRB	APCH CRS	Rwy ldg
Chan	10	327°	TDZE
			Arpt Elev
			12,001
			275
			294

[USAF]

ROBINS AFB (KWRB)

* When ALS inop, increase CAT AB RVR to 55, vis to 1 mile; CAT CDE vis to 1 3⁄8 miles. ** Circling not authorized SW of Rwy 15-33.	ALSF-1 A1	MISSED APPROACH: Climb To 2600 on WRB TACAN R-320 to EDKIF and hold.
---	--------------	--

ATIS 119.475 273.475	ATLANTA APP CON 124.2 279.6	TOWER 133.225 257.975	GND CON 121.85 275.8
-------------------------	--------------------------------	--------------------------	-------------------------



2600 WRB R-320	EDKIF WRB 14					
TACAN		CAPMI WRB 1	WRB 2,3	SOCAB WRB 6	DASKE WRB 12	
		5 NM		1800	3000	
		2.77°		TCH 55		
CATEGORY	A	B	C	D	E	
S-33*	720/24	445 (500-½)	720/45	445	(500-¾)	
CIRCLING**	780-1	486 (500-1)	880-1½	960-2	1040-2¾	
			586 (600-1½)	666 (700-2)	746 (800-2¾)	

HIRL Rwy 15-33

327°

TACAN Y RWY 33

SE-4, 07 AUG 2025 to 04 SEP 2025

SE-4, 07 AUG 2025 to 04 SEP 2025