

WARNER ROBINS, GEORGIA

TACAN Y RWY 15

TACAN WRB Chan 10	APCH CRS 143°	Rwy Idg 12,001 TDZE 294 Arpt Elev 294
-----------------------------	-------------------------	--

[USAF]

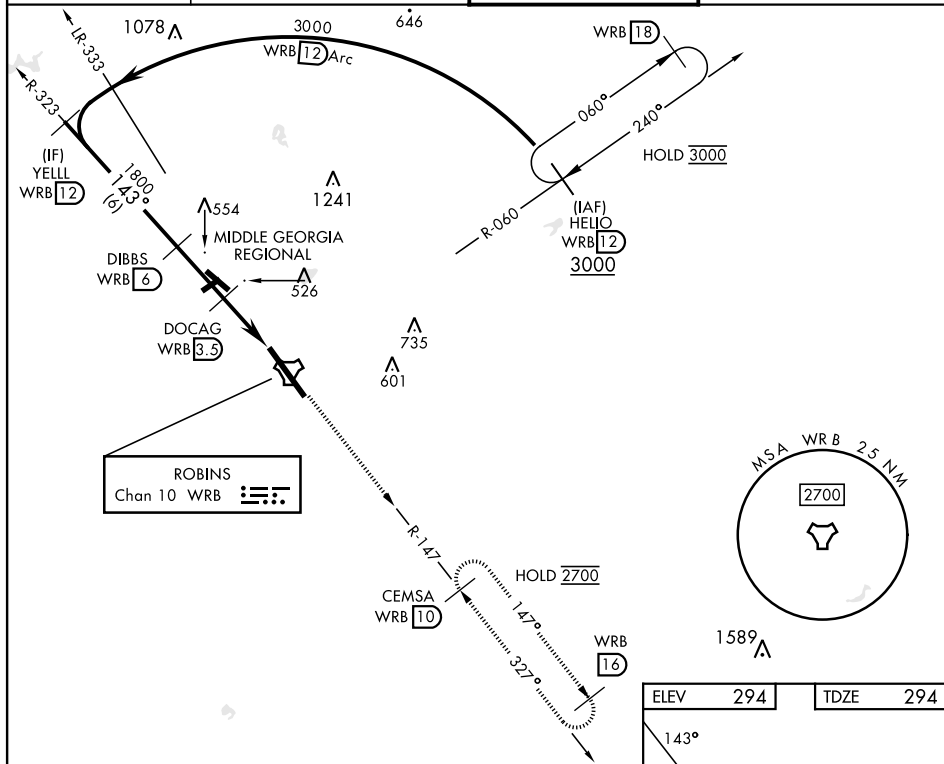
ROBINS AFB (KWRB)

* When ALS inop, increase CAT AB RVR to 55, vis to 1 mile; CAT CDE vis to 1 1/2 miles.
** Circling not authorized SW of Rwy 15-33.

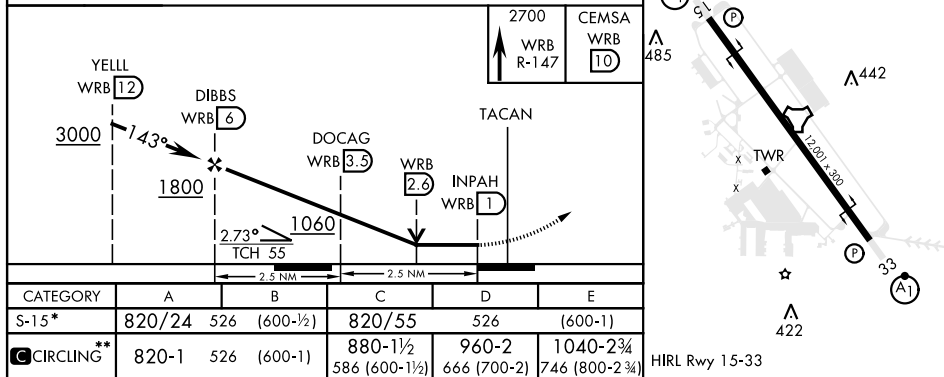


MISSED APPROACH: Climb To 2700 on WRB TACAN R-147 to CEMSA and hold.

ATIS 119.475 273.475	ATLANTA APP CON 124.2 279.6	TOWER 133.225 257.975	GND CON 121.85 275.8
-------------------------	--------------------------------	--------------------------	-------------------------



EMERG SAFE ALT 100 NM 3700



WARNER ROBINS, GEORGIA

32°38'N-83°36'W

ROBINS AFB (KWRB)

Orig 20MAY21

TACAN Y RWY 15

SE-4, 07 AUG 2025 to 04 SEP 2025

SE-4, 07 AUG 2025 to 04 SEP 2025