

APCH CRS	Rwy Idg	12,001
146°	TDZE	294
	Arpt Elev	294

* When ALS inop, increase CAT AB RVR to 55, vis to 1 mile, CAT CDE vis to 1 5/8 miles.
** Circling NA SW of Rwy 15-33.

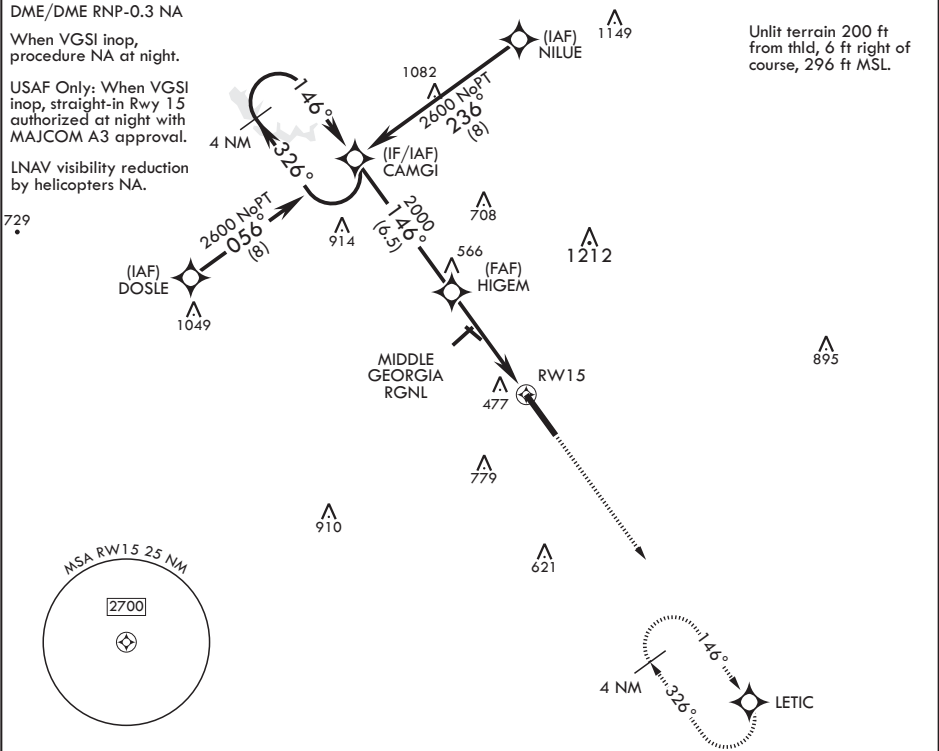
- (USAF)

ROBINS AFB (KWRB)



MISSED APPROACH: Climb to 2700 direct LETIC and hold.

ATIS 119.475 273.475	ATLANTA APP CON/DEP CON 124.2 279.6	TOWER 133.225 257.975	GND CON 121.85 275.8
-------------------------	--	--------------------------	-------------------------



EMERG SAFE ALT 100 NM 3700

