

LOC I-WRB <u>110.1</u>	APCH CRS 326°	Rwy Idg 12,001 TDZE 275 Arpt Elev 294
----------------------------------	-------------------------	--

ROBINS AFB (KWRB)

* When ALS inop, increase RVR to 40, vis to $\frac{3}{4}$ mile.
 ** When ALS inop, increase RVR to 55, vis to 1 mile.
 ** Circling not authorized SW of Rwy 15-33.

ALSF-1

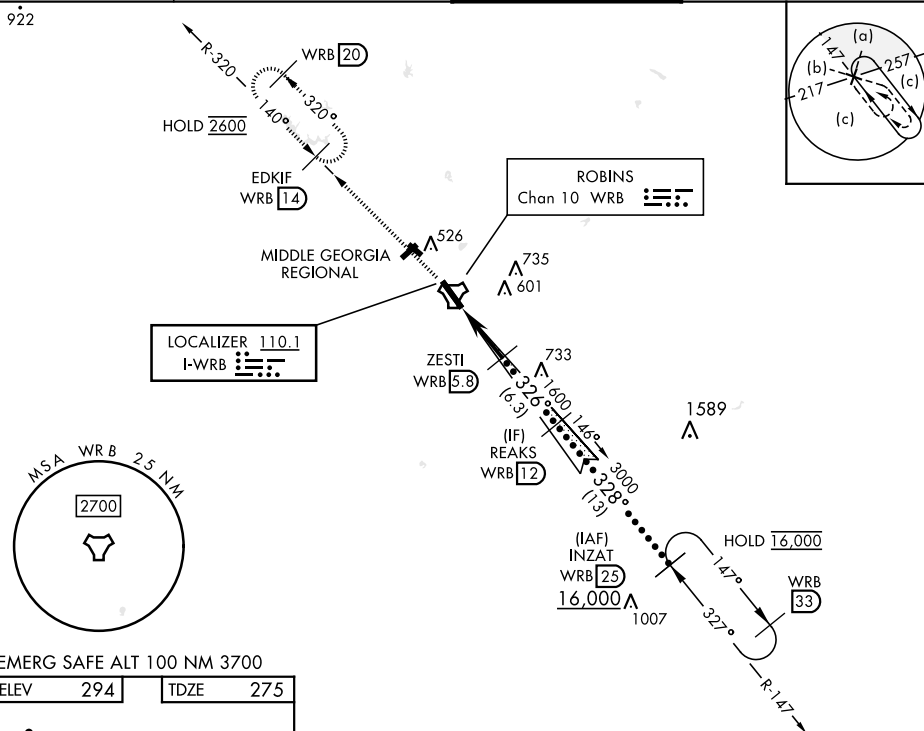
MISSED APPROACH: Climb To 2600 on WRB TACAN
R-320 to EDKIF and hold.

ATIS
119.475 273.475

ATLANTA APP CON
124.2 279.6

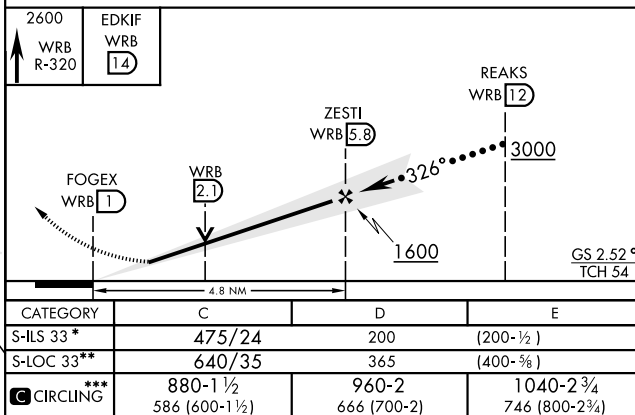
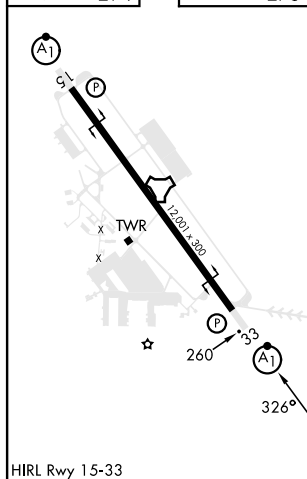
TOWER
133.225 257.975

GND CON
121.85 275.8



EMERG SAFE ALT 100 NM 3700

ELEV	294		TDZE	275
------	-----	--	------	-----



WARNER ROBINS, GEORGIA

32°38'N-83°36'W

ROBINS AFB (KWRB)

Orig 20MAY21

HI-ILS or LOC Z RWY 33

SE-4, 07 AUG 2025 to 04 SEP 2025