

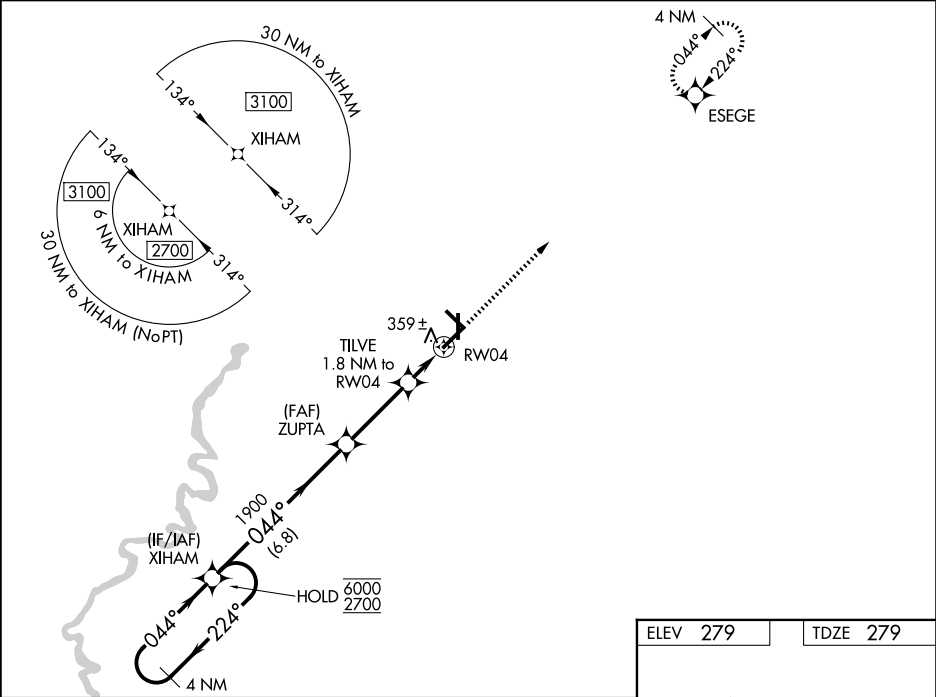
WAAS CH <b>77825</b> <b>W04A</b>	APP CRS <b>044°</b>	Rwy Ldg TDZE Apt Elev	<b>6001</b> <b>279</b> <b>279</b>
--	------------------------	-----------------------------	---

RNAV (GPS) RWY 4

WALNUT RIDGE RGNL (ARG)

RNP APCH - GPS.	MALSF	MISSED APPROACH: Climb to 2700 direct ESEGE and hold.
<div><div></div><div>For uncompensated Baro-VNAV systems, LNAV/VNAV NA below -1.5°C or above 54°C. For inop ALS, increase LNAV Cat C/D visibility to 1½ SM. Inop table does not apply to LPV and LNAV/VNAV all Cats.</div></div>	<div><div></div></div>	

AWOS-3PT <b>126.525</b>	MEMPHIS CENTER <b>120.075 289.4</b>	UNICOM <b>122.8 (CTAF) 0</b>
----------------------------	--	---------------------------------



4 NM Holding Pattern		XIHAM		ZUPTA		TILVE		RW04		ESEGE	
6000		224°		1900		1.8 NM to RW04		0.9 NM to RW04		2700	
2700		044°		900		0.9 NM to RW04		0.9 NM to RW04		ESEGE	
GP 3.00° TCH 45		044°		6.8 NM		3.1 NM		0.9 NM		0.9 NM	
CATEGORY		A		B		C		D			
LPV DA				529-¾		250 (300-¾)					
LNAV/VNAV DA				529-¾		250 (300-¾)					
LNAV MDA				620-¾		341 (400-¾)					
CIRCLING		840-1	561 (600-1)			840-1½ 561 (600-1½)		1000-2¼ 721 (800-2¼)			

