

WAAS CH <b>65925</b> <b>W18A</b>	APP CRS <b>179°</b>	Rwy Ldg TDZE <b>275</b> Apt Elev <b>279</b>
--	------------------------	---

RNAV (GPS) RWY 18

WALNUT RIDGE RGNL (ARG)

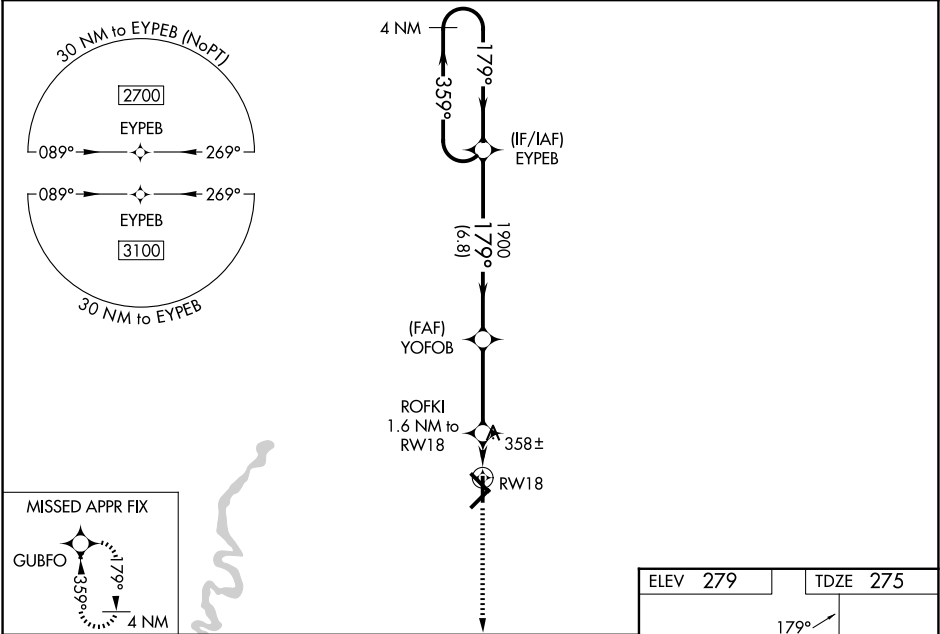
▼ For uncompensated Baro-VNAV systems, LNAV/VNAV NA below -15°C (5°F) or above 42°C (107°F). DME/DME RNP-0.3 NA. When local altimeter setting not received, use Jonesboro altimeter setting and increase LPV DA to 529 feet, LNAV/VNAV DA to 579 feet, and all MDAs 60 feet; increase Circling Cat D visibility ¼ SM. For inoperative ODALS, increase LPV all Cats and LNAV/VNAV all Cats visibility to ¾ mile and LNAV Cat C and D visibility to 1 mile. Baro-VNAV and VDP NA with Jonesboro altimeter setting.

ODALS

MISSED APPROACH:

Climb to 3100 direct GUBFO and hold.

AWOS-3PT <b>126.525</b>	MEMPHIS CENTER <b>120.075 289.4</b>	UNICOM <b>122.8</b> (CTAF)
----------------------------	--	-------------------------------



4 NM Holding Pattern		EYEB	YOFOB	ROFKI	3100	GUBFO
2700 ← 359°		179° →		1900	1.6 NM to RW18	*LNAV only.
GP 3.00° TCH 45		179°		1900	*1 NM to RW18	
		6.8 NM		3.4 NM	0.6 NM	1 NM
CATEGORY	A	B	C	D		
LPV DA	475-¾		200 (200-¾)			
LNAV/VNAV DA	525-¾		250 (300-¾)			
LNAV MDA	620-¾	345 (400-¾)	620-⅞	345 (400-⅞)		
CIRCLING	760-1	481 (500-1)	800-1½	1000-2¼		
			521 (600-1½)	721 (800-2¼)		

