

VOR/DME ALW  
**116.4**  
Chan **111**

APP CRS  
**203°**

Rwy Idg **6527**  
TDZE **1194**  
Apt Elev **1194**

VOR RWY 20  
WALLA WALLA RGNL (ALW)

ADF required.

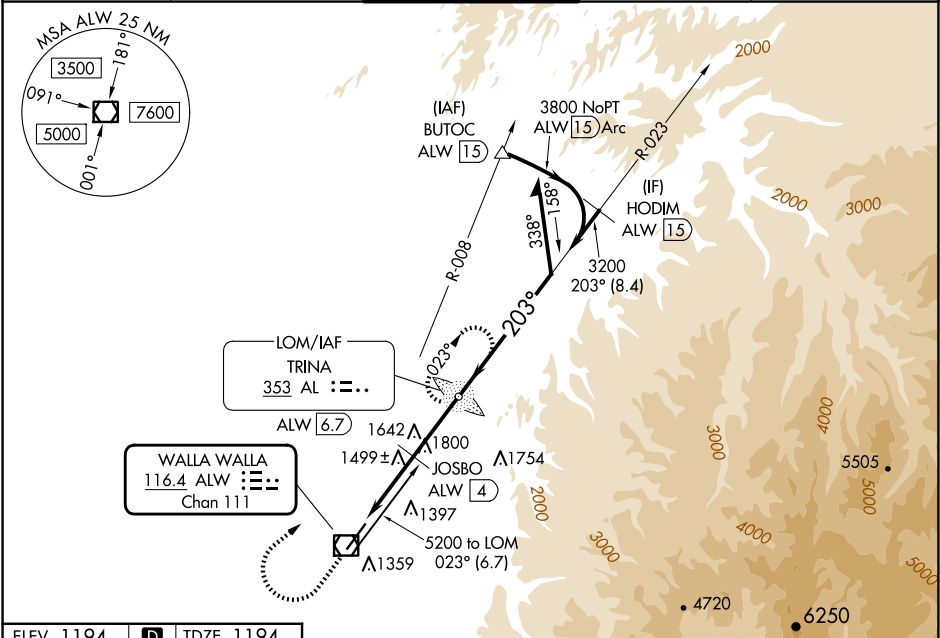
NA

For inop ALS, increase JOSBO fix minimums S-20 Cats C/D visibility to 1½ SM.

MALSR

MISSED APPROACH: Climb to 2300 then climbing right turn to 5100 direct TRINA LOM/ALW 6.7 DME and hold, continue climb-in-hold to 5100.

ASOS <b>135.875</b>	SPOKANE APP CON★ <b>133.15 379.15</b>	WALLA WALLA TOWER★ <b>118.5 (CTAF) 289.4</b>	GND CON <b>121.6 289.4</b>	UNICOM <b>122.95</b>
------------------------	--	---	-------------------------------	-------------------------



ELEV 1194 D TDZE 1194

203°

2300

5100

AL

TRINA AL LOM ALW 6.7

VGSI and descent angles not coincident (VGSI Angle 3.00/TCH 50).

Remain within 10 NM

023°

203°

4900

3200

\*2260 when using Pendleton altimeter setting.

2140\*

3.26° TCH 50

ALW VOR/DME

ALW 2.6

JOSBO ALW 4

1.6 NM

1.4 NM

2.7 NM

CATEGORY	A	B	C	D
S-20	2140/40 946 (1000-¾)		2140-2 946 (1000-2)	
CIRCLING	2140-1¼ 946 (1000-1¼)		2140-2¾ 946 (1000-2¾)	2300-3 1106 (1200-3)
JOSBO FIX MINIMUMS (DME REQUIRED)				
S-20	1760/24 566 (600-½)		1760-1¼ 566 (600-1¼)	
CIRCLING	1760-1 566 (600-1)	1820-1 626 (700-1)	2120-2¾ 926 (1000-2¾)	2300-3 1106 (1200-3)

REIL Rwy 20  
HIRL Rwy 2-20