

VOR/DME ALW

116.4

Chan 111

APP CRS

021°

Rwy Idg

6527

TDZE

1175

Apt Elev

1194

VOR RWY 2

WALLA WALLA RGNL (ALW)

DME required.

Rwy 2 helicopter visibility reduction below ¾ SM NA.

MISSED APPROACH: Climbing left turn to 4900 on ALW  
VOR/DME R-201 within 10 DME then right turn direct ALW  
VOR/DME and hold, continue climb-in-hold to 4900.

ASOS

135.875

SPOKANE APP CON★

133.15 379.15

WALLA WALLA TOWER★

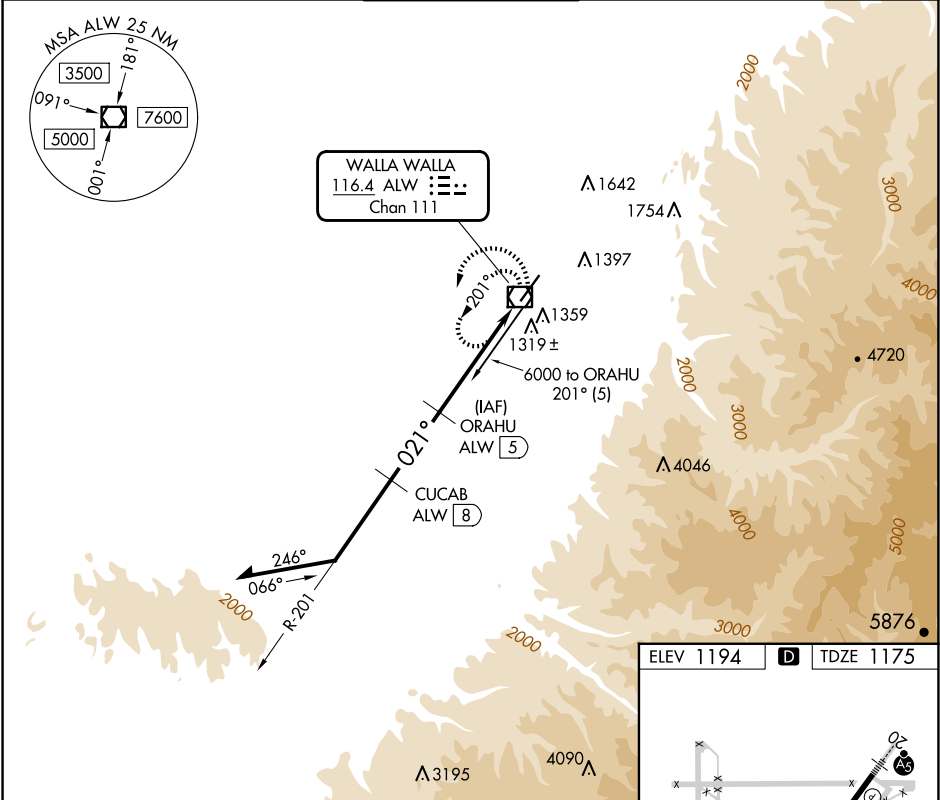
118.5 (CTAF) 289.4

GND CON

121.6 289.4

UNICOM

122.95



Remain within 10 NM

4800

201°

021°

3500

2800

3.05° TCH 45

3 NM

3.8 NM

1.2 NM

ORAHU ALW 5

4900

ALW R-201

ALW 1.3

ALW VOR/DME

ALW

6527 (1150)

TWR 1275

021°

CATEGORY	A	B	C	D
S-2	1580-1	405 (400-1)	1580-1 ⅛	405 (400-1 ⅓)
CIRCLING	1760-1 566 (600-1)	1820-1 626 (700-1)	2120-2 ¾ 926 (1000-2 ¾)	2300-3 1106 (1200-3)

REIL Rwy 2 1

HIRL Rwy 2-20 1