


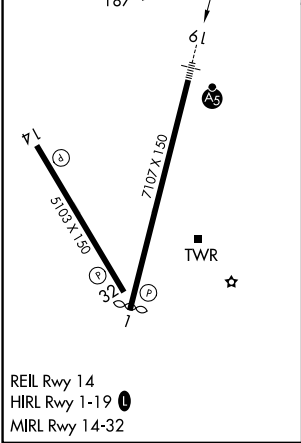
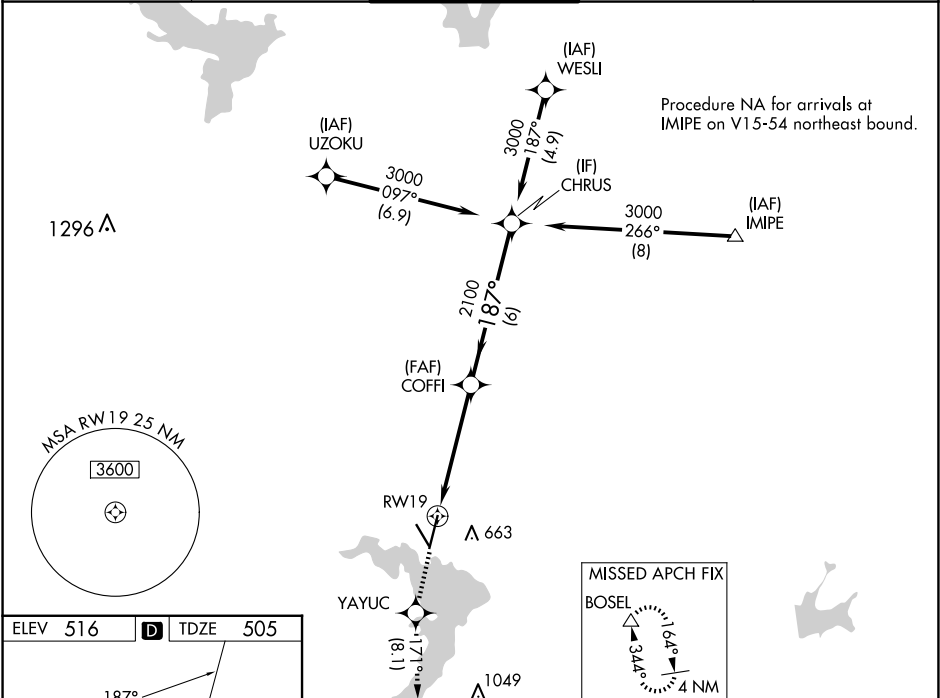
WAAS CH 82119 W19A	APP CRS 187°	Rwy Ldg TDZE 505 Apt Elev 516
--	------------------------	---

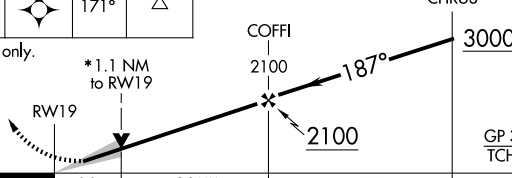
RNAV (GPS) RWY 19

WACO RGNL (ACT)

RNP APCH - GPS.	MALSR 	MISSED APPROACH: Climb to 4000 direct YAYUC and on track 171° to BOSEL and hold, continue climb-in-hold to 4000.
For uncompensated Baro-VNAV systems, LNAV/VNAV NA below -8°C or above 54°C. For inop ALS, increase LNAV/VNAV visibility all Cats to RVR 4000. ASR **RVR 1800 authorized with use of FD or AP or HUD to DA.		

ATIS 123.85	WACO APP CON ★ 127.65 227.125	WACO TOWER ★ 119.3 (CTAF) 0 257.8	GND CON 121.9	UNICOM 122.95
-----------------------	---	---	-------------------------	-------------------------



4000 ↑	YAYUC ✱	tr 171°	BOSEL △				
*LNAV only.							
				COFFI 2100		187°	CHRUS 3000
				2100		GP 3.00° TCH 55	
CATEGORY		A	B	C	D		
LPV	DA**	705/24		200 (200-½)			
LNAV/ VNAV	DA	755/24		250 (300-½)			
LNAV MDA		900/24	395 (400-½)	900/35	395 (400-¾)		
CIRCLING		940-1 424 (500-1)	980-1 464 (500-1)	1020-1½ 504 (600-1½)	1160-2 644 (700-2)		

SC-3, 07 AUG 2025 to 04 SEP 2025

SC-3, 07 AUG 2025 to 04 SEP 2025