

WAAS CH 65919 W01A	APP CRS 007°	Rwy Ldg TDZE 511 Apt Elev 516
--	------------------------	---

RNAV (GPS) RWY 1

WACO RGNL (ACT)

RNP APCH - GPS.

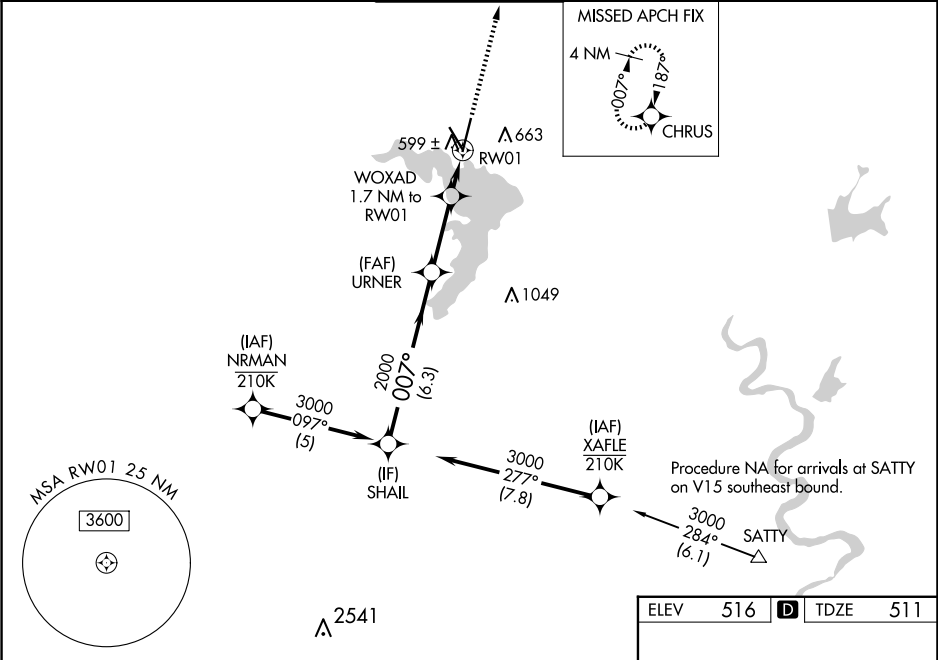
⚠

ASR

For uncompensated Baro-VNAV systems, LNAV/VNAV NA below -8°C or above 54°C. Baro-VNAV and VDP NA when using PWG altimeter setting. Rwy 1 helicopter visibility reduction below ¾ SM NA. When local altimeter setting not received, use PWG altimeter setting and increase LPV DA to 792 feet and all visibilities ½ SM. Increase LNAV/VNAV DA to 813 feet; increase all MDAs 40 feet and LNAV visibility Cat C/D ½ SM, and Circling visibility Cat D ¼ SM.

MISSED APPROACH:
Climb to 3000 direct
CHRU and hold.

ATIS 123.85	WACO APP CON ★ 127.65 227.125	WACO TOWER ★ 119.3 (CTAF) 0 257.8	GND CON 121.9	UNICOM 122.95
-----------------------	---	---	-------------------------	-------------------------



	SHAIL	URNER	WOXAD 1.7 NM to RW01	3000	CHRU
	3000	2000	1100	3000	CHRU
	GP 3.00° TCH 55°				
	6.3 NM	2.8 NM	0.8 NM	0.9 NM	
CATEGORY	A	B	C	D	
LPV DA		761-¾	250 (300-¾)		
LNAV/VNAV DA		782-7/8	271 (300-7/8)		
LNAV MDA		860-1	349 (400-1)		
CIRCLING	940-1 424 (500-1)	980-1 464 (500-1)	1020-1½ 504 (600-1½)	1160-2 644 (700-2)	

