

VOR/DME VCT	APP CRS	Rwy Ldg	9111
109.0	127°	TDZE	115
Chan 27		Apt Elev	115

VOR RWY 13
VICTORIA RGNL (VCT)

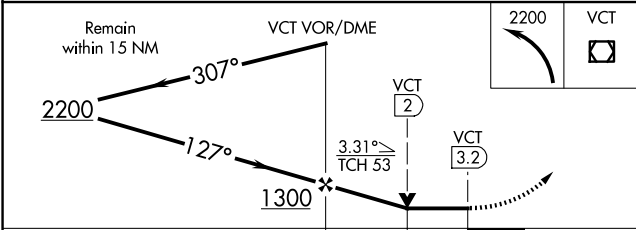
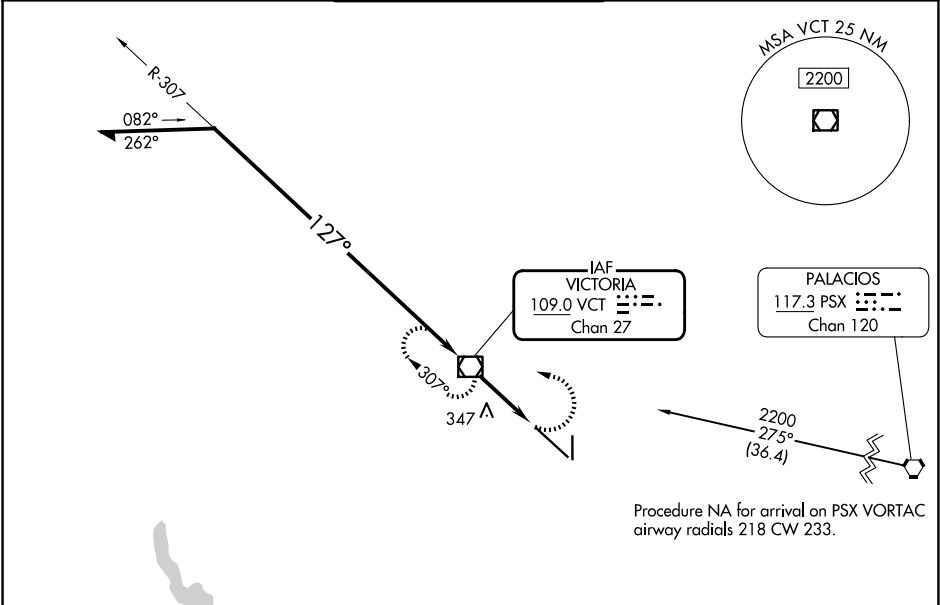
For inop ALS, increase Cat C/D/E visibility to 1 3⁄8 SM.

MALSR

MISSED APPROACH:

Climbing left turn to 2200
direct VCT VOR/DME and
hold, continue climb-in-hold
to 2200.

ATIS 119.025	HOUSTON CENTER 135.05 353.6	VICTORIA TOWER ★ 126.075 (CTAF) 0 257.95	GND CON 120.525 239.25	UNICOM 122.7
-----------------	--------------------------------	---	---------------------------	-----------------



ELEV 115

D

TDZE 115

127°

307°

2200

VCT

9111 X 130

TWR

81

4908 X 75

36

MIRL Rwy 18-36

REIL Rwy 18 and 36

HIRL Rwy 13-31 0

FAF to MAP 3.2 NM

Knots	60	90	120	150	180
Min:Sec	3:12	2:08	1:36	1:17	1:04