

WAAS CH 45545 W31A	APP CRS 308°	Rwy Ldg 9111 TDZE 106 Apt Elev 115
--	------------------------	---

RNAV (GPS) RWY 31
VICTORIA RGNL (VCT')

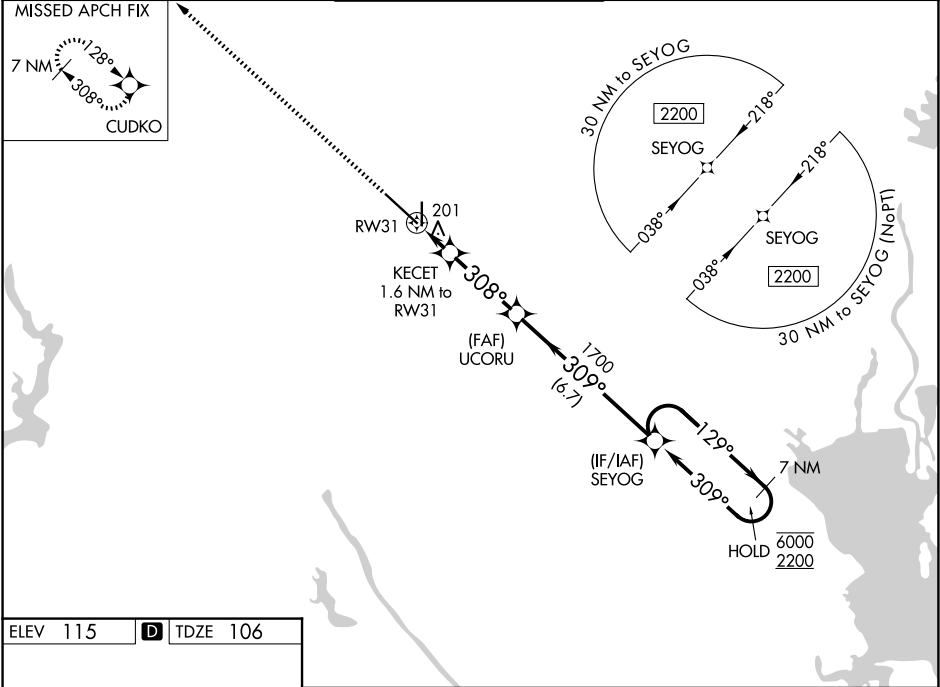
RNP APCH-GPS.

V
A

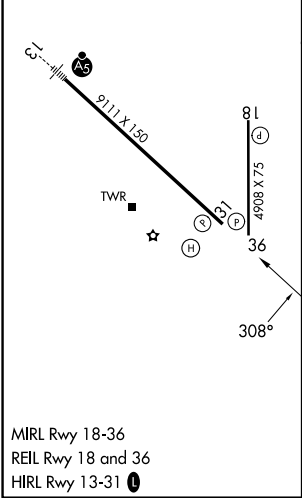
For uncompensated Baro-VNAV systems, procedure NA below -15°C or above 54°C.

MISSED APPROACH:
Climb to 2200 direct
CUDKO and hold.

ATIS 119.025	HOUSTON CENTER 135.05 353.6	VICTORIA TOWER ★ 126.075 (CTAF) 0 257.95	GND CON 120.525 239.25	UNICOM 122.7
------------------------	---------------------------------------	--	----------------------------------	------------------------



ELEV 115	D	TDZE 106
----------	----------	----------



2200 ↑		CUDKO 		SEYOG		7 NM Holding Pattern					
		KECET 1.6 NM to RW31		UCORU 1700		129° → 6000 ← 309° 2200					
		1 NM to RW31				GP 3.00° TCH 55					
		RW31									
		1 NM 0.6		3.2 NM		6.7 NM					
CATEGORY		A		B		C		D		E	
LPV DA		306-¾ 200 (200-¾)									
LNAV/ VNAV DA		374-⅞ 268 (300-⅞)									
LNAV MDA		460-1 354 (400-1)									
CIRCLING		580-1		465 (500-1)		820-2 705 (800-2)		880-2½ 765 (800-2½)		NA	

SC-5, 07 AUG 2025 to 04 SEP 2025

SC-5, 07 AUG 2025 to 04 SEP 2025