

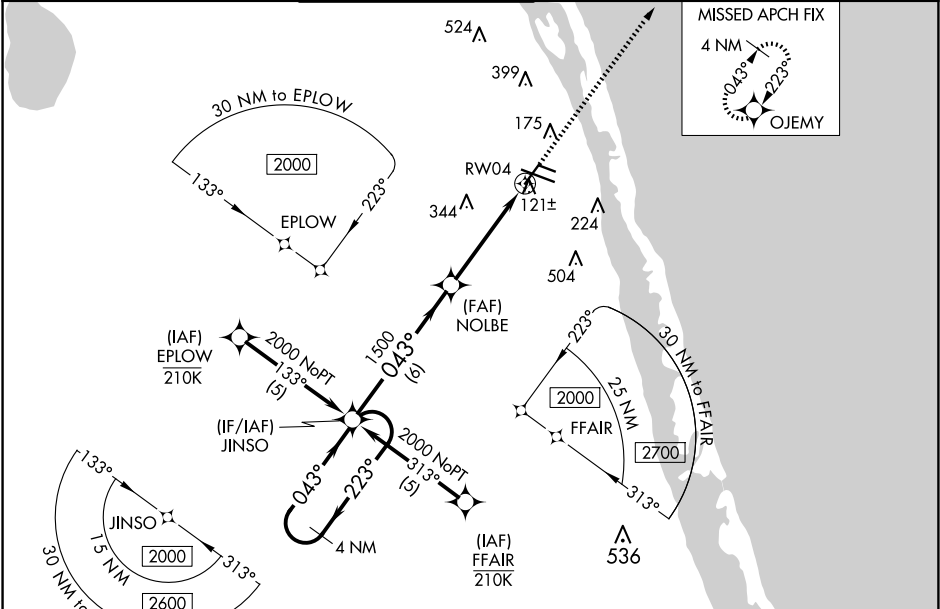
WAAS CH 61311 W04A	APP CRS 043°	Rwy Ldg TDZE 24 Apt Elev 24	4974
----------------------------------------	------------------------	-------------------------------------------------	-------------

RNAV (GPS) RWY 4
VERO BEACH RGNL (VRB)

⚠ Circling to Rwy 30R NA at night. For uncompensated Baro-VNAV systems, LNAV/VNAV NA below 0°C (32°F) or above 54°C (130°F). DME/DME RNP-0.3 NA. When local altimeter setting not received, use Fort Pierce altimeter setting and increase LPV DA to 320 feet; increase LNAV/VNAV DA to 378 feet and all visibilities 1/8 SM; increase all MDAs 40 feet and LNAV Cat C/D and Circling Cat C/D visibility 1/4 SM. Baro-VNAV and VDP NA when using Fort Pierce altimeter setting. Rwy 4 helicopter visibility reduction below 3/4 SM NA.

MISSED APPROACH:
Climb to 2000 direct
OJEMY and hold.

ATIS 120.575	PALM BEACH APP CON 123.625 225.4 (N)	VERO BEACH TOWER ★ 126.3 (CTAF) 0	GND CON 127.45	CLNC DEL 134.975	UNICOM 122.95
------------------------	------------------------------------------------	---------------------------------------------	--------------------------	----------------------------	-------------------------



ELEV 24 D TDZE 24

4 NM Holding Pattern JINSO

2000 ← 223° → 043° →

GP 3.00° TCH 40

NOLBE 1500

RW04 1500

***1.3 NM to RW04**

***LNAV only.**

6 NM 3.2 NM 1.3

2000 OJEMY

TWR

12R 12L 30L 30R

4914 X 100 7314 X 100 3505 X 75

043°

CATEGORY	A	B	C	D
LPV DA	297-7/8 273 (300-7/8)			
LNAV/VNAV DA	355-1 331 (400-1)			
LNAV MDA	480-1 456 (500-1)	480-1 3/8 456 (500-1 3/8)		
CIRCLING	560-1 536 (600-1)	660-1 3/4 636 (700-1 3/4)	820-2 1/2 796 (800-2 1/2)	

MIRL Rwy 4-22, 12R-30L, and 12L-30R 0
REIL Rwy 4, 12R, 22 and 30L 0

SE-3, 07 AUG 2025 to 04 SEP 2025

SE-3, 07 AUG 2025 to 04 SEP 2025