

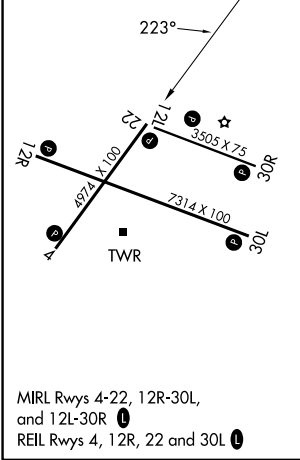
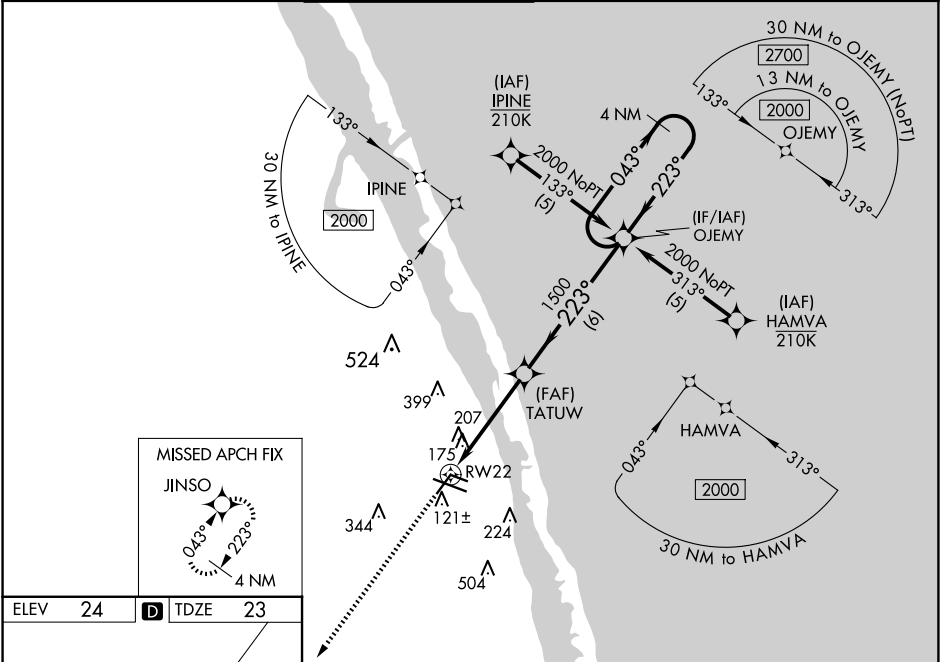
| | | |
|--|------------------------|---|
| WAAS CH 53611 W22A | APP CRS 223° | Rwy Ldg 4974 TDZE 23 Apt Elev 24 |
|--|------------------------|---|



RNAV (GPS) RWY 22
VERO BEACH RGNL (VRB)

⚠ Circling to Rwy 30R NA at night. For uncompensated Baro-VNAV systems, LNAV/VNAV NA below 0°C (32°F) or above 43°C (109°F). DME/DME RNP-0.3 NA. When local altimeter setting not received, use Fort Pierce altimeter setting and increase LPV DA to 363 feet and all visibilities ½ SM; increase LNAV/VNAV DA to 567 feet and all visibilities ½ SM; increase all MDAs 40 feet and LNAV Cat C/D visibility ⅓ SM and Circling Cat C/D visibility ¼ SM. Baro-VNAV and VDP NA when using Fort Pierce altimeter setting. Rwy 22 helicopter visibility reduction below ¾ SM NA.

MISSED APPROACH:
Climb to 2000 direct
JINSO and hold.

| | | | | | |
|------------------------|--|--|--------------------------|----------------------------|-------------------------|
| ATIS 120.575 | PALM BEACH APP CON 123.625 225.4 (N) | VERO BEACH TOWER★ 126.3 (CTAF) 0 | GND CON 127.45 | CLNC DEL 134.975 | UNICOM 122.95 |
|------------------------|--|--|--------------------------|----------------------------|-------------------------|



| | | | | | |
|---|---|----------------------|------------------------|------------------------|--|
| 2000 | JINSO | 4 NM Holding Pattern | | | |
|  |  | | | | |
| *LNAV only. | | | | | |
| *1.4 NM to RW22 | | | | | |
| RW22 | | | | | |
| TATUW | | | | | |
| 1500 | | | | | |
| 1500 | | | | | |
| 223° | | | | | |
| 223° | | | | | |
| 043° | | | | | |
| 2000 | | | | | |
| GP 3.00° | | | | | |
| TCH 42° | | | | | |
| 1.4 | | 3.1 NM | | 6 NM | |
| CATEGORY | A | B | C | D | |
| LPV DA | 340-1 317 (400-1) | | | | |
| LNAV/VNAV DA | 544-1¾ 521 (600-1¾) | | | | |
| LNAV MDA | 520-1 | 497 (500-1) | 520-1¾ | 497 (500-1¾) | |
| CIRCLING | 560-1 | 536 (600-1) | 660-1¾ 636 (700-1¾) | 820-2½ 796 (800-2½) | |

SE-3, 07 AUG 2025 to 04 SEP 2025

SE-3, 07 AUG 2025 to 04 SEP 2025