

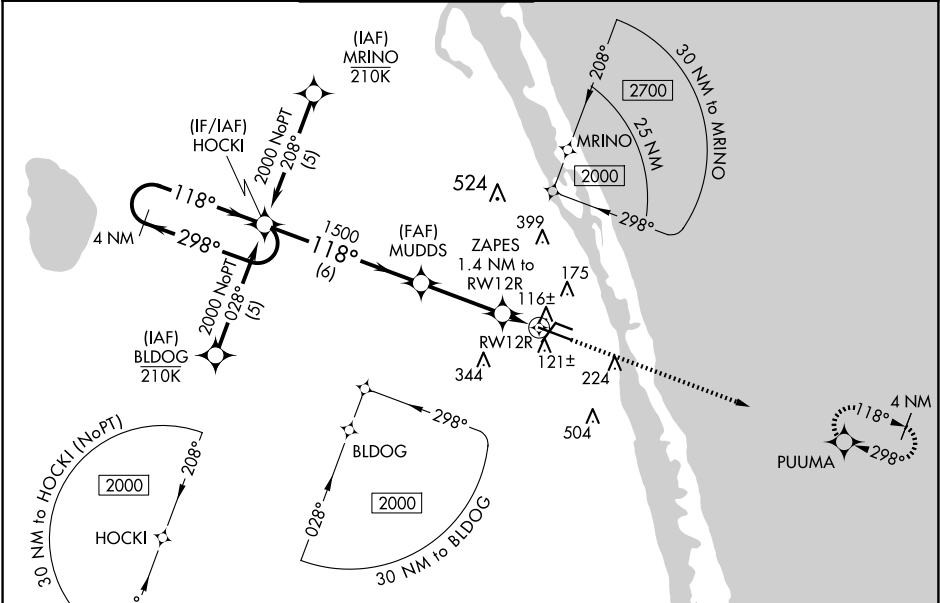
WAAS CH 53511 W12A	APP CRS 118°	Rwy Ldg TDZE Apt Elev	7314 23 24
--	------------------------	-----------------------------	---------------------------------------

RNAV (GPS) RWY 12R
VERO BEACH RGNL (VRB)

⚠ Circling to Rwy 30R NA at night. Baro-VNAV NA when using Fort Pierce altimeter setting. For uncompensated Baro-VNAV systems, LNAV/VNAV NA below 0°C (32°F) or above 54°C (130°F). DME/DME RNP-0.3 NA. When local altimeter setting not received, use Fort Pierce altimeter setting and increase LPV DA to 302 feet; increase LNAV/VNAV DA to 317 feet; increase all MDAs 40 feet and LNAV Cat C/D visibility 1/8 SM and Circling Cat C/D visibility 1/4 SM.

MISSED APPROACH:
Climb to 2000 direct PUUMA and hold.

ATIS 120.575	PALM BEACH APP CON 123.625 225.4 (N)	VERO BEACH TOWER ★ 126.3 (CTAF) 0	GND CON 127.45	CLNC DEL 134.975	UNICOM 122.95
------------------------	--	---	--------------------------	----------------------------	-------------------------



4 NM Holding Pattern		2000		PUUMA	
← 298°		118° →		*LNAV only.	
GP 3.00°		1500		RW12R	
TCH 42		*500		1.4 NM	
6 NM		3.1 NM		1.4 NM	
CATEGORY	A	B	C	D	
LPV DA		279-3/4	256 (300-3/4)		
LNAV/VNAV DA		294-7/8	271 (300-7/8)		
LNAV MDA		380-1	357 (400-1)		
CIRCLING	560-1	536 (600-1)	660-1 3/4 636 (700-1 3/4)	820-2 1/2 796 (800-2 1/2)	

MIRL Rwy 4-22, 12R-30L, and 12L-30R 0

REIL Rwy 4, 12R, 22 and 30L 0

SE-3, 07 AUG 2025 to 04 SEP 2025

SE-3, 07 AUG 2025 to 04 SEP 2025