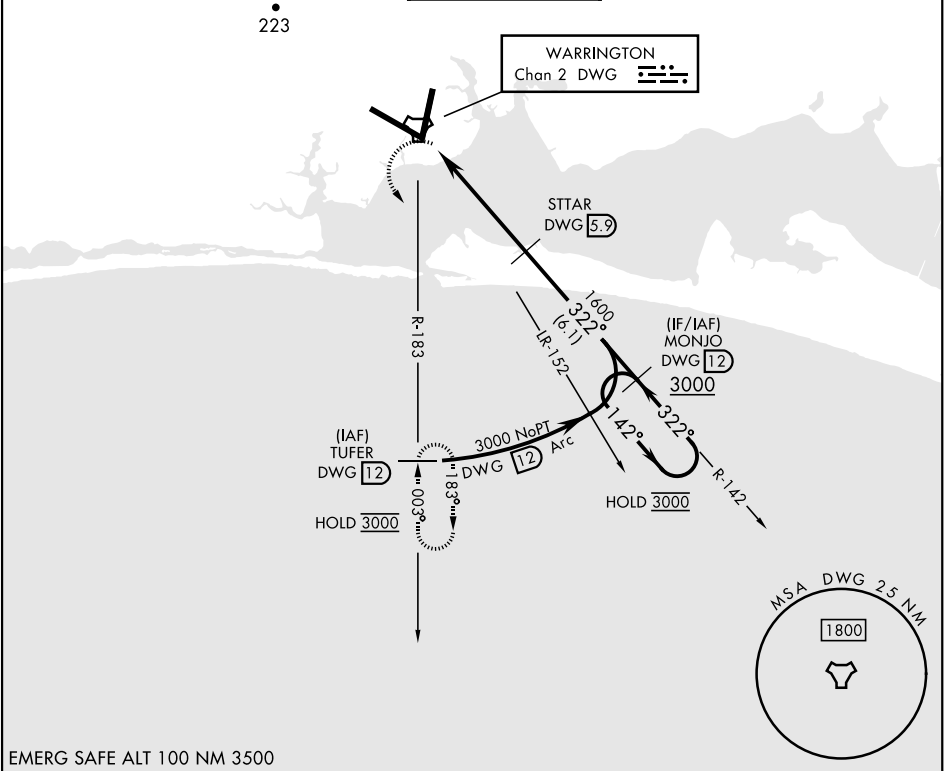


TACAN RWY 30

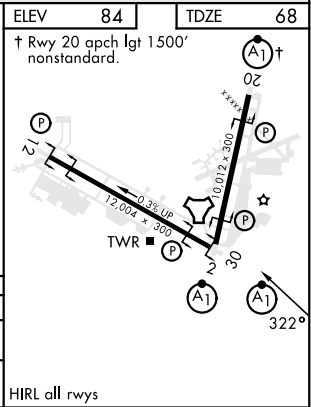
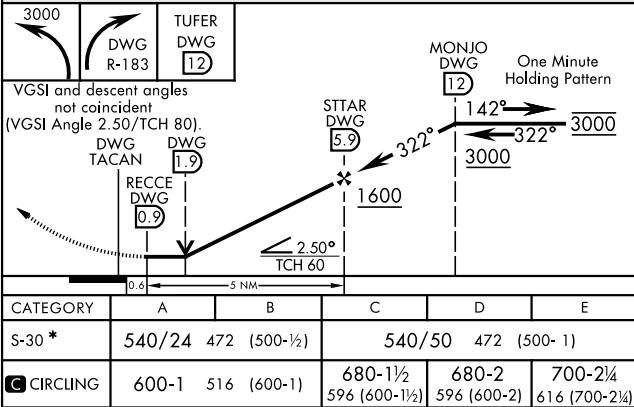
TACAN	DWG	APCH CRS	Rwy Idg	TDZE	12,004
Chan 2		322°	68	Arpt Elev	84

[USAF] EGLIN AFB DESTIN FORT WALTON BEACH (KVPS)

* When ALS inop, increase CAT AB RVR to 55 vis to 1 mile; CAT CDE vis to 1 3/8 miles.			ALS F-1 (A1)	MISSED APPROACH: Climbing left turn to 3000 and intercept DWG TACAN R-183 direct TUFER/12 DME and hold.	
ATIS ★ 134.625 273.5	APP CON 125.1 281.45 271°- 089° 132.1 360.6 090°- 270°	TOWER 118.2 353.65	GND CON 121.8 335.8	CLNC DEL 127.7 377.2	



EMERG SAFE ALT 100 NM 3500



TACAN RWY 30

SE-3, 07 AUG 2025 to 04 SEP 2025

SE-3, 07 AUG 2025 to 04 SEP 2025