

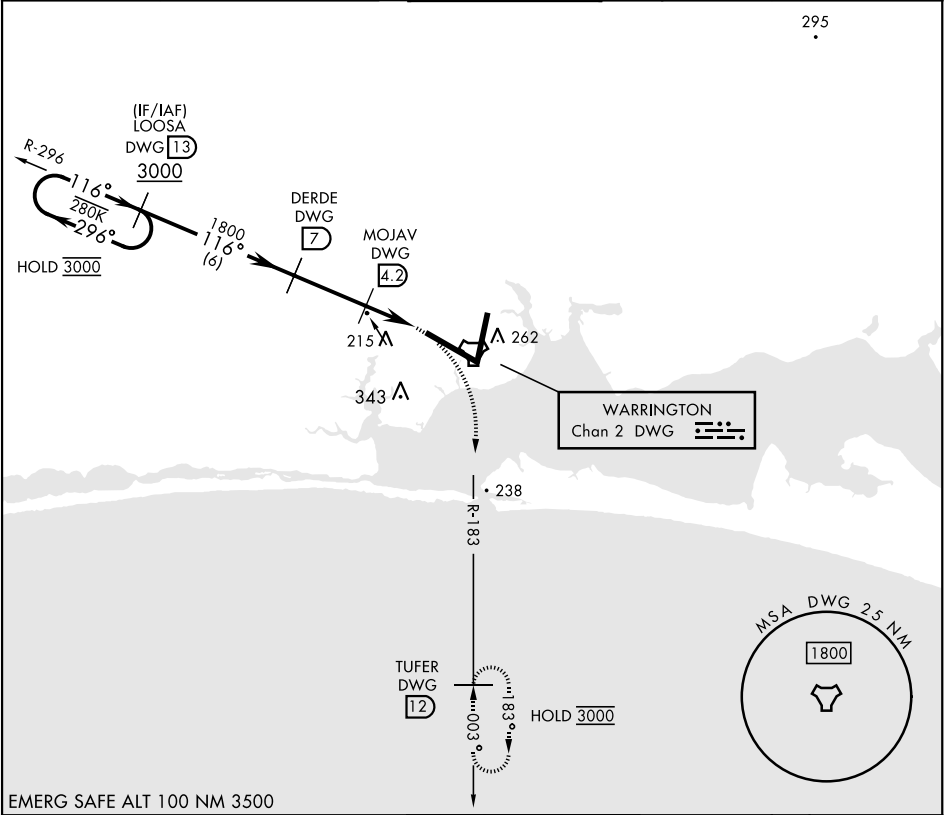
TACAN RWY 12

TACAN DWG Chan 2	APCH CRS 116°	Rwy Idg TDZE 84 Arpt Elev 84
---------------------	------------------	------------------------------------

[USAF] EGLIN AFB DESTIN FORT WALTON BEACH (KVPS)

MISSED APPROACH: Climb to 600, then climbing right turn to 3000 and intercept DWG TACAN R-183 to TUFER/12 DME and hold.

ATIS ★ 134.625 273.5	APP CON 125.1 281.45 271°- 089° 132.1 360.6 090°- 270°	TOWER 118.2 353.65	GND CON 121.8 335.8	CLNC DEL 127.7 377.2
-------------------------	--	-----------------------	------------------------	-------------------------



EMERG SAFE ALT 100 NM 3500

LOOSA DWG 13	DERDE DWG 7	MOJAV DWG 4.2	LEDKE DWG 2.2	DWG TACAN
One Minute Holding Pattern				
3000	1800	920		
296°	116°	300°		
116°				
2.8 NM	2.0 NM	0.5 NM		

CATEGORY	A	B	C	D	E
S-12	520/55	436 (500-1)	520-1¼	436 (500-1¼)	
✪ CIRCLING	600-1	516 (600-1)	680-1½ 596 (600-1½)	680-2 596 (600-2)	700-2¼ 616 (700-2¼)

VALPARAISO DESTIN FT WALTON BEACH, FLORIDA

ELEV 84	TDZE 84
---------	---------

↑ Rwy 20 apch lgt 1500' nonstandard.

116°

0.3% DOWN

12,004' x 300'

TWR

02

30

A1

A1

A1

A1

TACAN RWY 12

SE-3, 07 AUG 2025 to 04 SEP 2025

SE-3, 07 AUG 2025 to 04 SEP 2025