
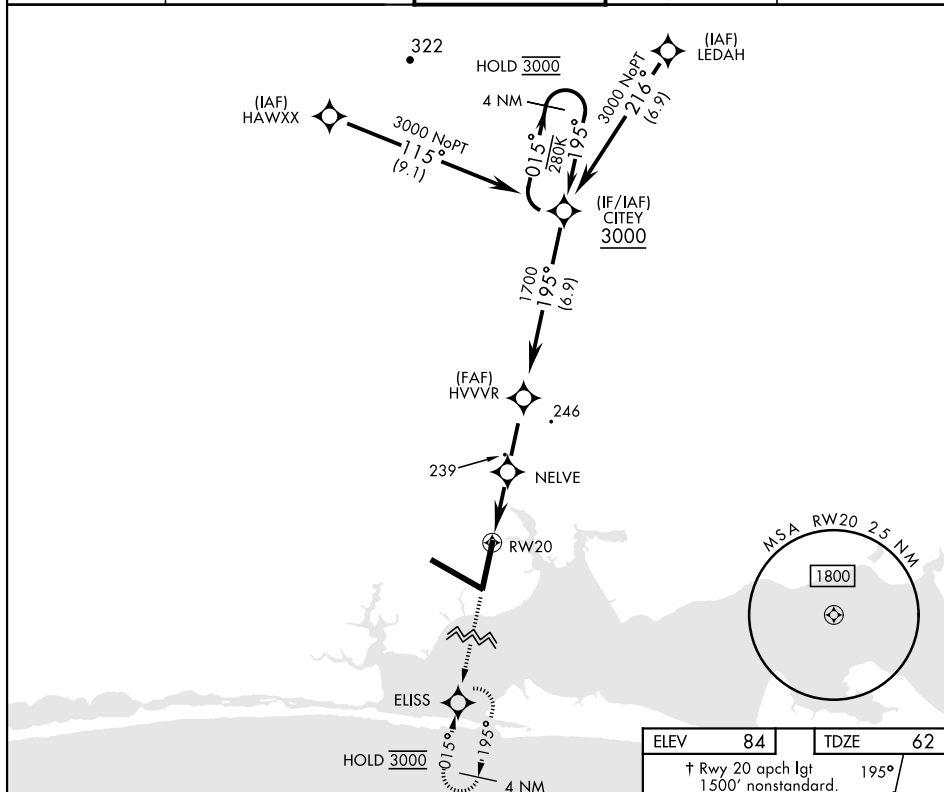


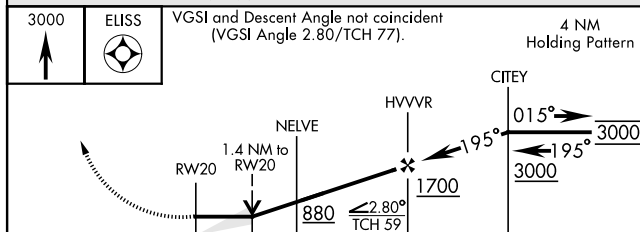
## RNAV (GPS) RWY 20

[USAF] EGLIN AFB DESTIN FORT WALTON BEACH (KVPS)

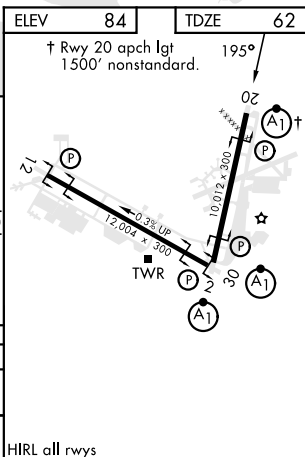
RNP APCH - GPS		ALSF-1		MISSED APPROACH: Climb to 3000 direct ELISS and hold.	
* When ALS inop increase CAT AB RVR to 55, vis to 1 mile; CAT CDE vis to 1 1/2 miles.					
ATIS ★ <b>134.625 273.5</b>		APP CON <b>125.1 281.45 271°- 089°</b> <b>132.1 360.6 090°- 270°</b>		TOWER <b>118.2 353.65</b>	
				GND CON <b>121.8 335.8</b>	
				CLNC DEL <b>127.7 377.2</b>	



EMERG SAFE ALT 100 NM 3500



CATEGORY	A	B	C	D	E
LNAV MDA *	540/24	478 (500-½)	540/50	478	(500-1)
C CIRCLING	600-1	516 (600-1)	680-1½ 596 (600-1½)	680-2 596 (600-2)	700-2¼ 616 (700-2¼)



VALPARAISO DESTIN FT WALTON BEACH, FLORIDA

EGLIN AFB DESTIN FORT WALTON BEACH (KVPS)

Amdt 1 16MAY24

30°29'N-86°32'W

## RNAV (GPS) RWY 20

SE-3, 07 AUG 2025 to 04 SEP 2025