

VALDOSTA, GEORGIA

RNAV (GPS) RWY 18R

APCH CRS 183°	Rwy Idg TDZE Arpt Elev	8002 231 233
------------------	------------------------------	--------------------

- (USAF)

MOODY AFB (KVAD)

RNP APCH-GPS

**T**\* When ALS inop, increase CAT AB RVR to 55, vis to 1 mile; CAT CDE vis to 1 3/8 miles.

MALSF

A5

**MISSED APPROACH:** Climb to 3000 direct JAKAR and hold.

ATIS★  
273.5

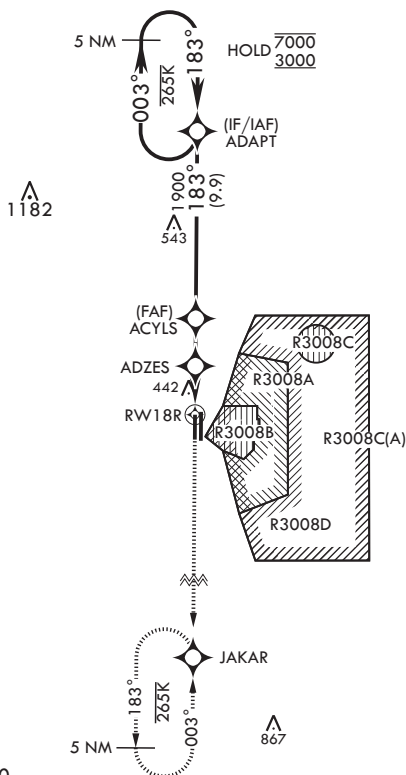
VALDOSTA APP CON  
126.6 285.6

TOWER★  
128.45 (CTAF) 257.625

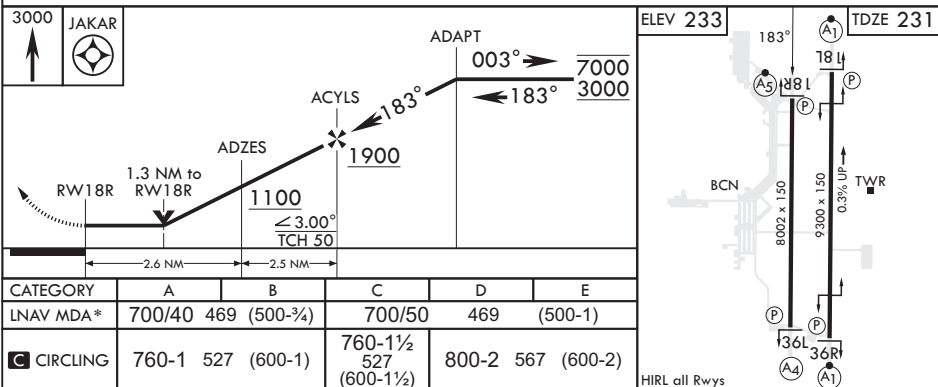
GND CON  
138.95 275.8

CLNC DEL  
120.625 296.7

Rwy 18R helicopter  
visibility reduction  
below RVR 4000  
not authorized.



EMERG SAFE ALT 100 NM 3300



VALDOSTA, GEORGIA

30°58'N - 83°12'W

MOODY AFB (KVAD)

Amdt 1 25JAN24

RNAV (GPS) RWY 18R

SE-4, 07 AUG 2025 to 04 SEP 2025