

TACAN VAD Chan <b>80</b>	APCH CRS <b>187°</b>	Rwy Idg <b>9300</b> TDZE <b>233</b> Arpt Elev <b>233</b>
-----------------------------	-------------------------	--

MOODY AFB (KVAD)

\* When ALS inop, increase vis to 1 3/8 miles.



**MISSED APPROACH:** Climb to 3000 on VAD TACAN R-173 to CARLO and hold.

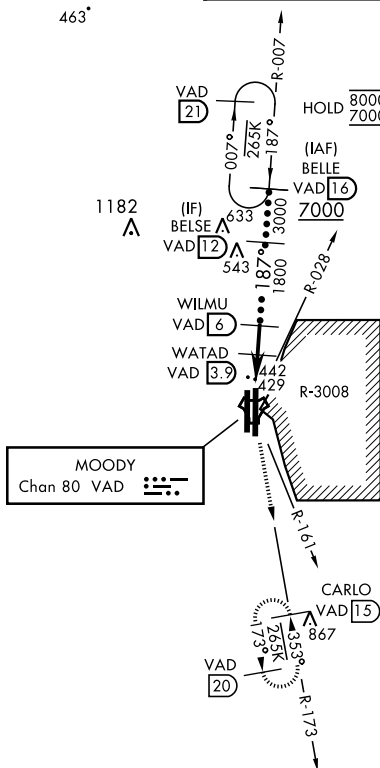
ATIS ★  
273.5

VALDOSTA APP CON  
**126.6 285.6**

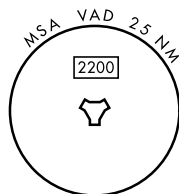
TOWER★  
128.45 (CTAF) 257.625

GND CON  
138.95 275.8

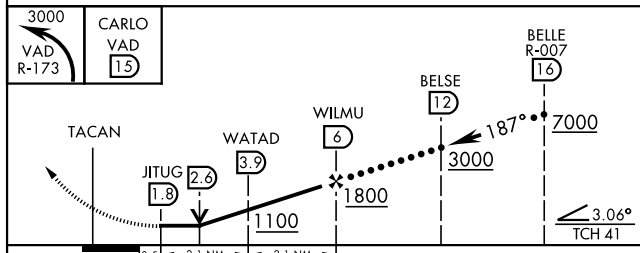
CLNC DEL  
**120.625 296.7**




**CAUTION:** Remain west of VAD R-028 and VAD R-161 when R-3008 is active.



EMERG SAFE ALT 100 NM 3300



CATEGORY	C	D	E
S-18L *	700/50	467 (500-1)	
 CIRCLING	760-1½ 527 (600-1½)	800-2	567 (600-2)

