

VORTAC TUL 114.4 Chan 91	APP CRS 262°	Rwy Idg 7376 TDZE 652 Apt Elev 678
--	------------------------	---

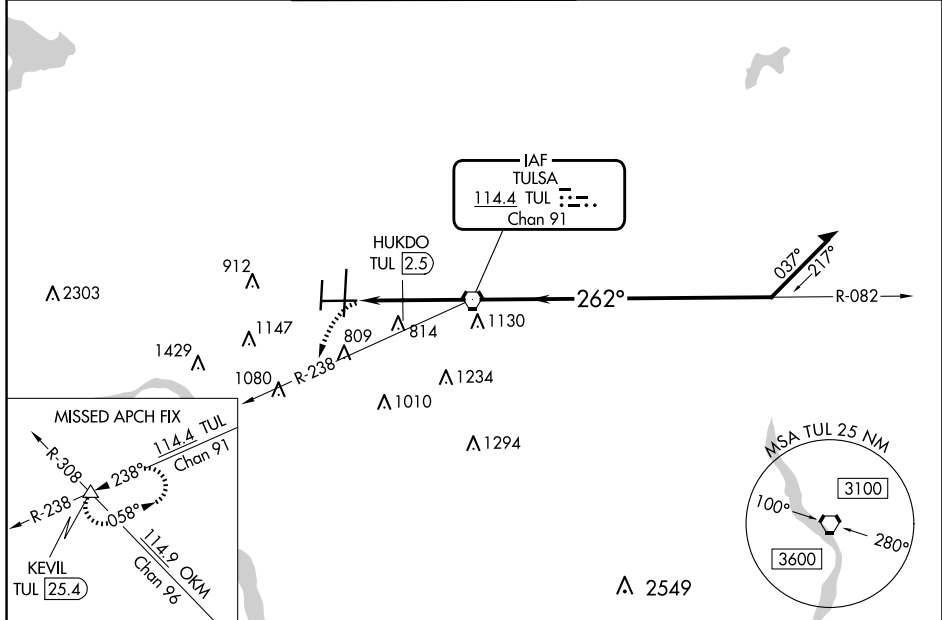
VOR Y or TACAN Y RWY 26
TULSA INTL (TUL)

T Circling NA for Cat E south of Rwy 8-26. VOR Minimums: For inop ALS, increase Cat A/B visibility to 1 SM and Cat E to 1½ SM.
A HUKOD Minimums: For inop ALS, increase Cat A/B visibility to 1 SM and Cat E to 1¼ SM.
 ASR

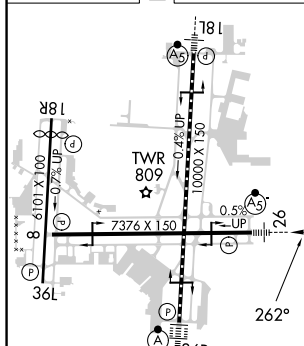


MISSED APPROACH: Climbing left turn to 2600 on heading 220° and on TUL VORTAC R-238 to KEVIL INT/TUL 25.4 DME and hold.

D-ATIS 124.9 377.2	TULSA APP CON 124.0 338.3	TULSA TOWER 121.2 310.8 (Rwys 18L-36R, 8-26) 118.7 257.8 (Rwy 18R-36L)	GND CON 121.9 348.6	CLNC DEL 134.05 284.7
------------------------------	-------------------------------------	--	-------------------------------	---------------------------------



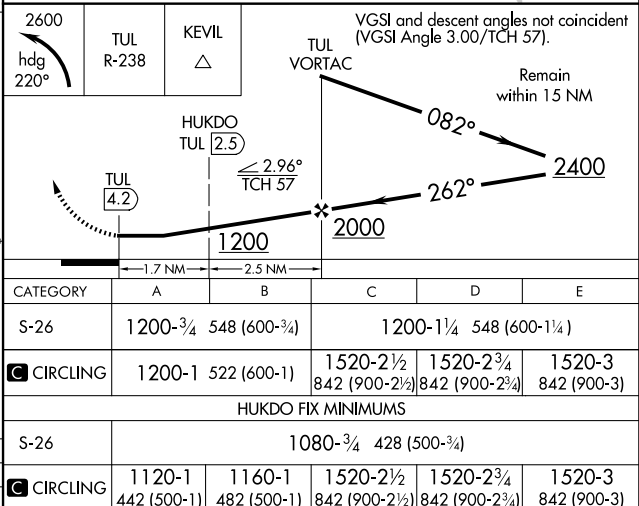
ELEV 678	D	TDZE 652
----------	----------	----------



TDZ/CL Rwy 36R
HIRL Rwys 8-26, 18L-36R and 18R-36L
REIL Rwys 8, 18R and 36L

FAF to MAP 4.2 NM

Knots	60	90	120	150	180
Min:Sec	4:12	2:48	2:06	1:41	1:24



TULSA, OKLAHOMA
Amdt 24F 05SEP24

36°12'N-95°53'W

TULSA INTL (TUL)

VOR Y or TACAN Y RWY 26