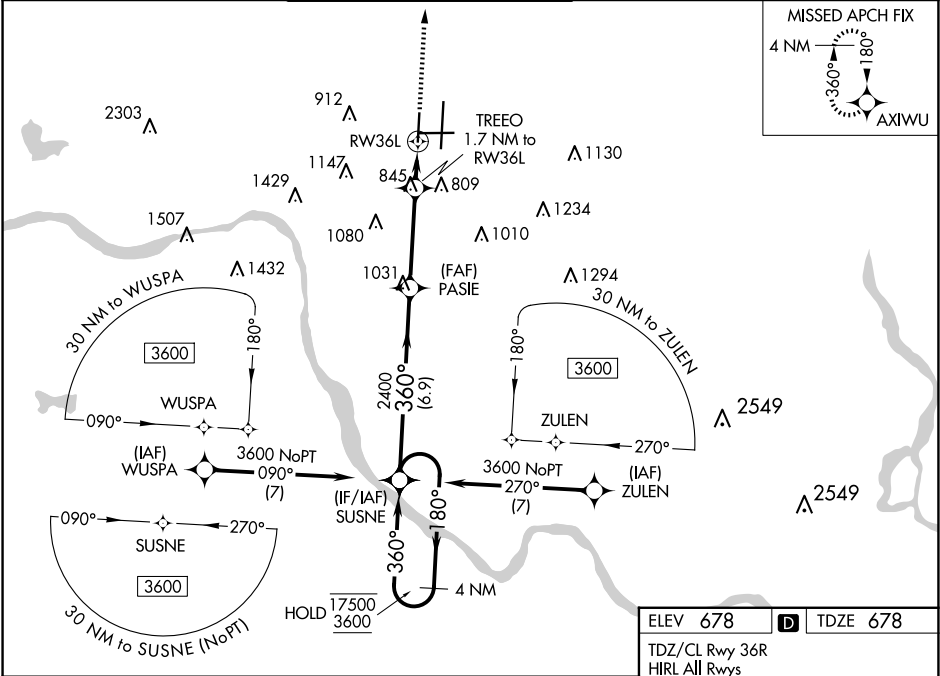


WAAS CH <b>50344</b> <b>W36B</b>	APP CRS <b>360°</b>	Rwy Idg TDZE Apt Elev	<b>5101</b> <b>678</b> <b>678</b>
----------------------------------------	------------------------	-----------------------------	-----------------------------------------

RNAV (GPS) RWY 36L

TULSA INTL (TUL)

RNP APCH - GPS.		MISSED APPROACH: Climb to 3500 direct AXIWU and hold.	
Use of FD or AP required during simultaneous operations. For uncompensated Baro-VNAV systems, LNAV/VNAV NA below -14°C or above 54°C. Simultaneous approach authorized. LNAV procedure NA during simultaneous operations.			
D-ATIS <b>124.9 377.2</b>	TULSA APP CON <b>124.0 338.3</b>	TULSA TOWER <b>121.2 310.8</b> (Rwys 18L-36R, 8-26) <b>118.7 257.8</b> (Rwy 18R-36L)	CLNC DEL <b>134.05 284.7</b>
		GND CON <b>121.9 348.6</b>	



4 NM Holding Pattern		3500 AXIWU	
GP 3.00° TCH 45		TREO 1.7 NM to RW36L	
CATEGORY		A	
LPV DA		928-3/4 250 (300-3/4)	
LNAV/VNAV DA		1088-1 1/8 410 (500-1 1/8)	
LNAV MDA		1120-1 442 (500-1) 1120-1 3/8 442 (500-1 3/8)	
CIRCLING		1120-1 442 (500-1) 1160-1 482 (500-1) 1500-2 1/2 822 (900-2 1/2) 1520-2 3/4 842 (900-2 3/4)	

