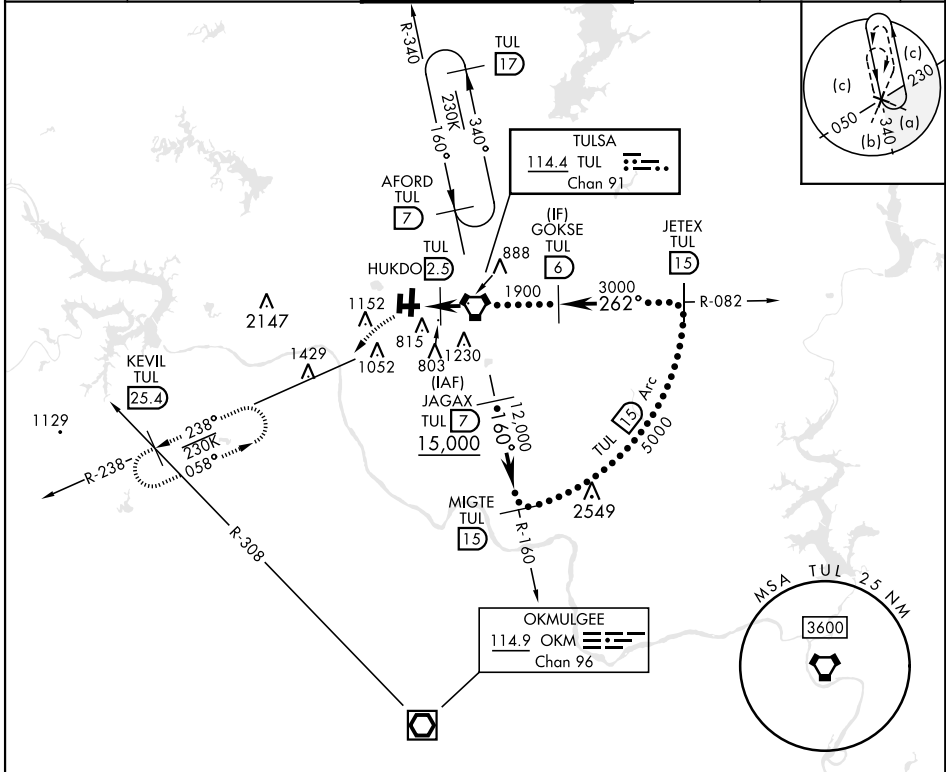


TULSA, OKLAHOMA

25107

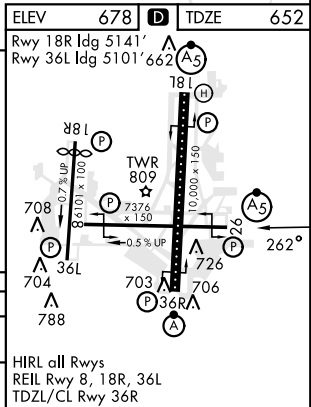
HI-VOR Z or TACAN Z RWY 26

| | | | | |
|---|---|---|-------------------------------|--|
| VORTAC TUL 114.4 Chan 91 | APCH CRS 262° | Rwy Idg TDZE 652 Arpt Elev 678 | [USAF] | TULSA INTL (KTUL) |
| DME required | | | MALSR A5 | MISSED APPROACH: Climbing left turn to 2600 on heading 220° and TUL VORTAC R-238 to KEVIL/TUL 25.4 DME and hold. |
| *When ALS inop, increase CAT CDE vis to 1¼ miles. **CAT E circling not authorized S of Rwy 8-26. | | | | |
| ATIS 124.9 377.2 | APP CON 124.0 338.3 175° - 354° 119.1 351.8 355° - 174° | TOWER 121.2 310.8 Rwy 18L-36R, 8-26 118.7 257.8 Rwy 18R-36L | GND CON 121.9 348.6 | CLNC DEL 134.05 284.7 ASR |



EMERG SAFE ALT 100 NM 4500

| | | | | | |
|---------------------|--------------|-------------------------------|-------------------------------|-----------------------|-------------------|
| 2600 hdg 220° | TUL R-238 | KEVIL TUL 25.4 | | | GOKSE TUL 6 |
| TUL 3 4.2 | TUL 1200 | HUKDO TUL 2.5 | TUL VORTAC 1900 | 262° | 3000 |
| 1.7 NM | | 2.5 NM | | | |
| CATEGORY | | C | D | E | |
| S-26 * | | 1080-3/4 428 | | (500-3/4) | |
| CIRCLING ** | | 1520-2 1/2 842 (900-2 1/2) | 1520-2 3/4 842 (900-2 3/4) | 1520-3 842 (900-3) | |



TULSA, OKLAHOMA

36°12'N-95°53'W

TULSA INTL (KTUL)

Amdbt 3B 30NOV23

HI-VOR Z or TACAN Z RWY 26