

VORTAC TCC

113.6

Chan **83**

APP CRS

201°

Rwy Idg

7104

TDZE

4047

Apt Elev

4065

VOR RWY 21

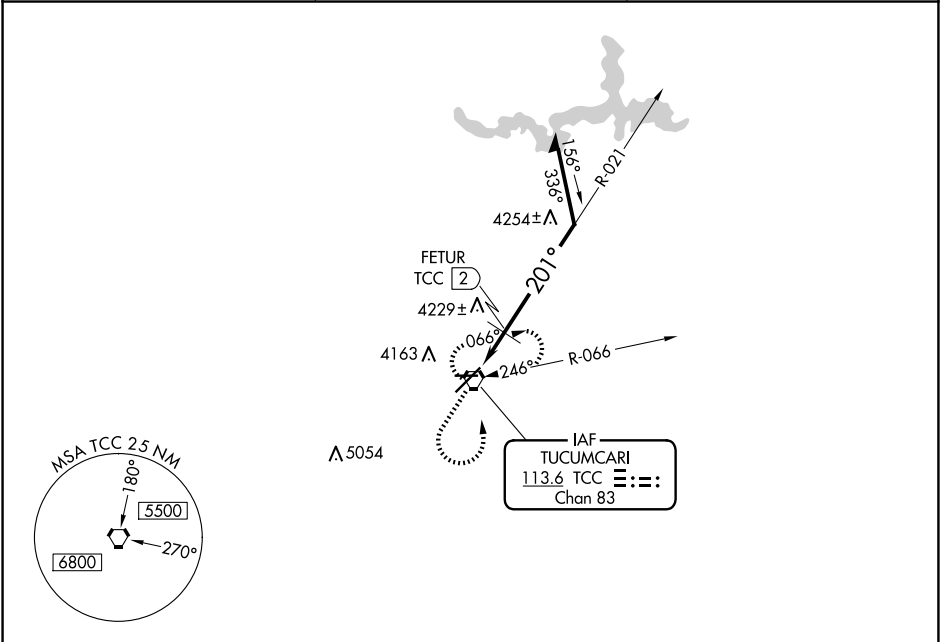
TUCUMCARI MUNI (TCC)

▼

If local altimeter setting not received, procedure NA.
Circling NA for Cat D north of Rwy 8 and northwest of Rwy 21.

MISSED APPROACH: Climb to 5100 then climbing left turn to 6100 direct TCC VORTAC and hold.

ASOS 119.275	ALBUQUERQUE CENTER 126.85 285.6	UNICOM 122.95 (CTAF) 0
------------------------	---	----------------------------------



ELEV 4065

TDZE 4047

201° to VORTAC

0.6% UP

4600 X 60

7104 X 100

8

26

3

5100

6100

TCC

5229 Δ

6100

TCC VORTAC

021°

FETUR TCC 2

3.03°

TCH 52

4600

5800

201°

1.6 NM

Remain within 10 NM

CATEGORY	A	B	C	D
S-21	4600-1	553 (600-1)	4600-1½ 553 (600-1½)	4600-1¾ 553 (600-1¾)
CIRCLING	4600-1	535 (600-1)	4600-1½ 535 (600-1½)	4640-2 575 (600-2)
FETUR FIX MINIMUMS				
S-21	4480-1	433 (500-1)	4480-1¼ 433 (500-1¼)	4480-1½ 433 (500-1½)
CIRCLING	4580-1	515 (600-1)	4580-1½ 515 (600-1½)	4640-2 575 (600-2)