

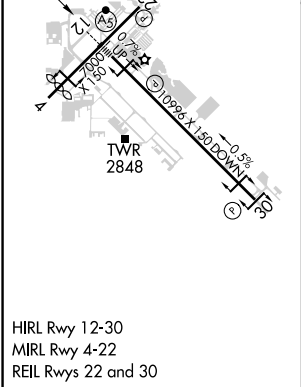
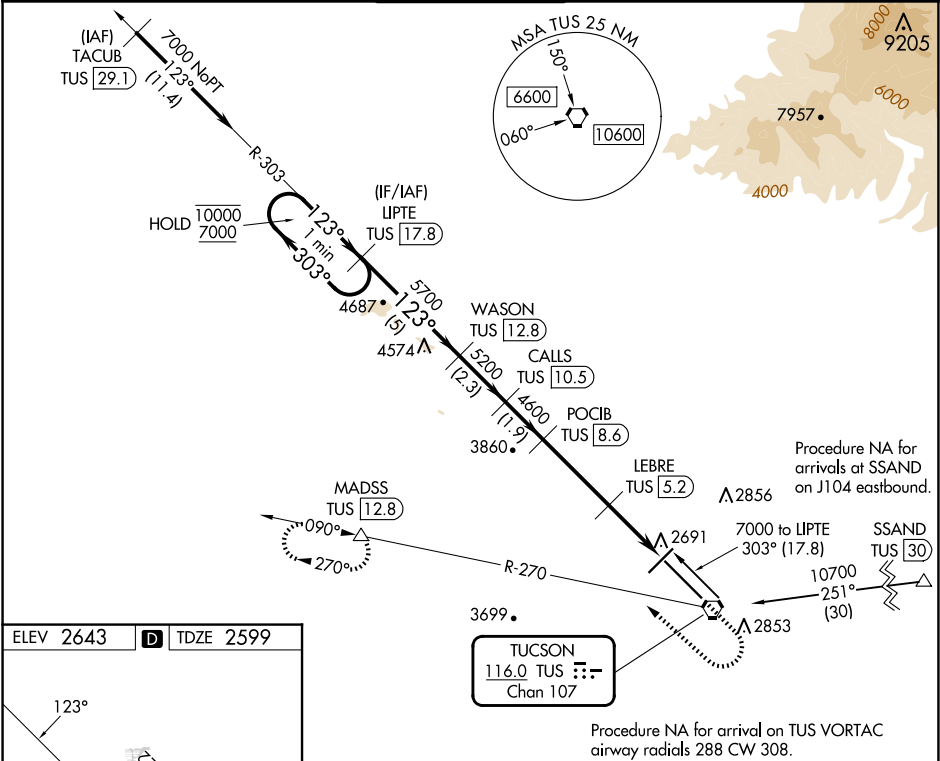


VORTAC TUS	APP CRS	Rwy Idg	10996
116.0	123°	TDZE	2599
Chan 107		Apt Elev	2643

VOR or TACAN RWY 12  
TUCSON INTL (TUS)

DME required. RADAR required for procedure entry at TACUB.	MALSR	MISSED APPROACH: Climb to 4000 then climbing right turn to 6000 on heading 300° and TUS VORTAC R-270 to MADSS/TUS 12.8 DME and hold, continue climb in hold to 6000.
 For inop ALS, increase Cat E visibility to 1¼ SM.		

ATIS 123.8 279.65	TUCSON APP CON 119.4 318.1	TUCSON TOWER 118.3 257.8	GND CON 120.025 348.6	CLNC DEL 126.65 326.2
----------------------	-------------------------------	-----------------------------	--------------------------	--------------------------



VGSI and descent angles not coincident (VGSI Angle 3.00/TCH 73).				
One Minute Holding Pattern	LIPTU TUS 17.8	WASON TUS 12.8	CALLS TUS 10.5	POCIB TUS 8.6
10000 7000	303° 123°	5700 5200	4600 3540	303° 123°
5 NM 2.3 NM 1.9 NM 3.3 NM 1.7 NM 1.2				
CATEGORY	A	B	C	D
S-12	3020/24	421 (400-½)	3020/40	421 (400-¾)
CIRCLING	3160-1 517 (600-1)	3180-1 537 (600-1)	3200-1½ 557 (600-½)	3660-3 1017 (1100-3)