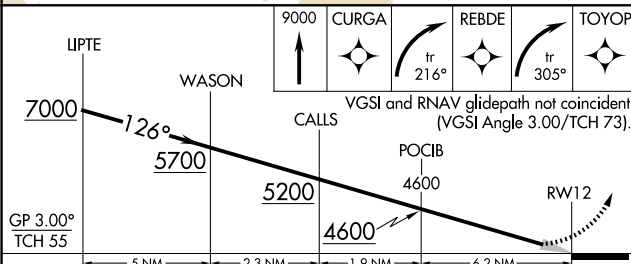
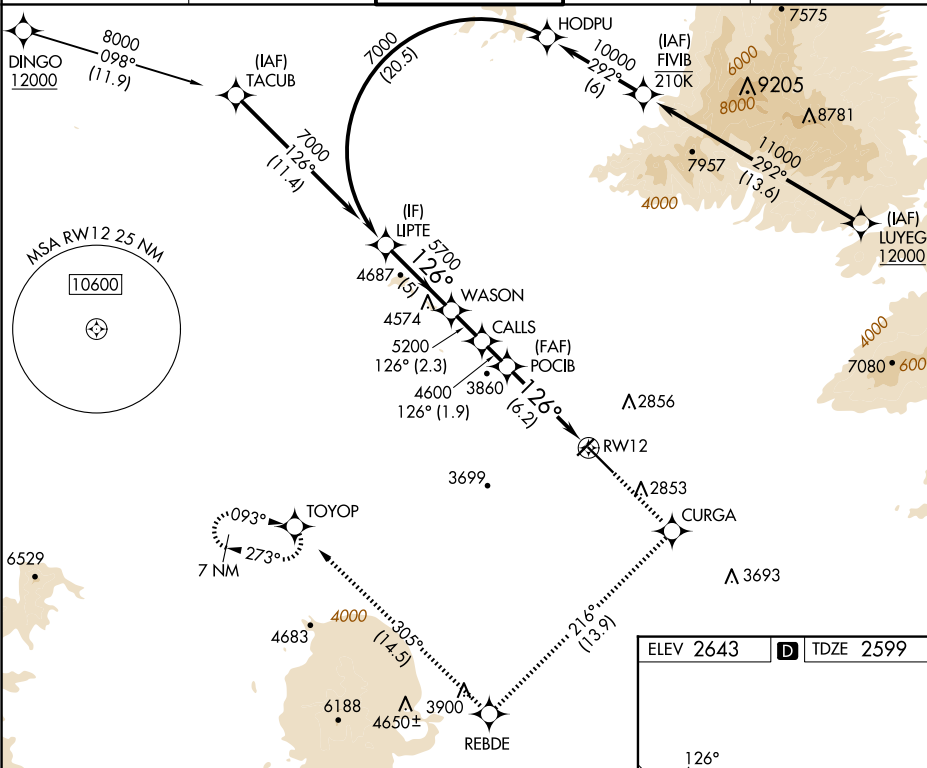


RNAV (RNP) Y RWY 12
TUCSON INTL (TUS)

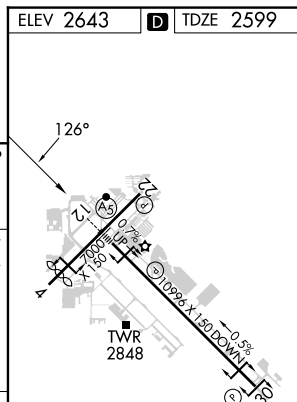
MISSED APPROACH: Climb to 9000 direct CURGA and climbing right turn on track 216° to REBDE and climbing right turn on track 305° to TOYOP and hold, continue climb-in-hold to 9000.

CLNC DEL
126.65 326.2



CATEGORY	A	B	C	D
RNP 0.30 DA	2905/24 306 (300-1/2)			

AUTHORIZATION REQUIRED



HIRL Rwy 12-30
MIRL Rwy 4-22
REIL Rwy 22 and 30