

APP CRS
216°

Rwy Idg
TDZE
2572

Apt Elev
2643

RNAV (GPS) RWY 22

TUCSON INTL (TUS)

RNP APCH - GPS.

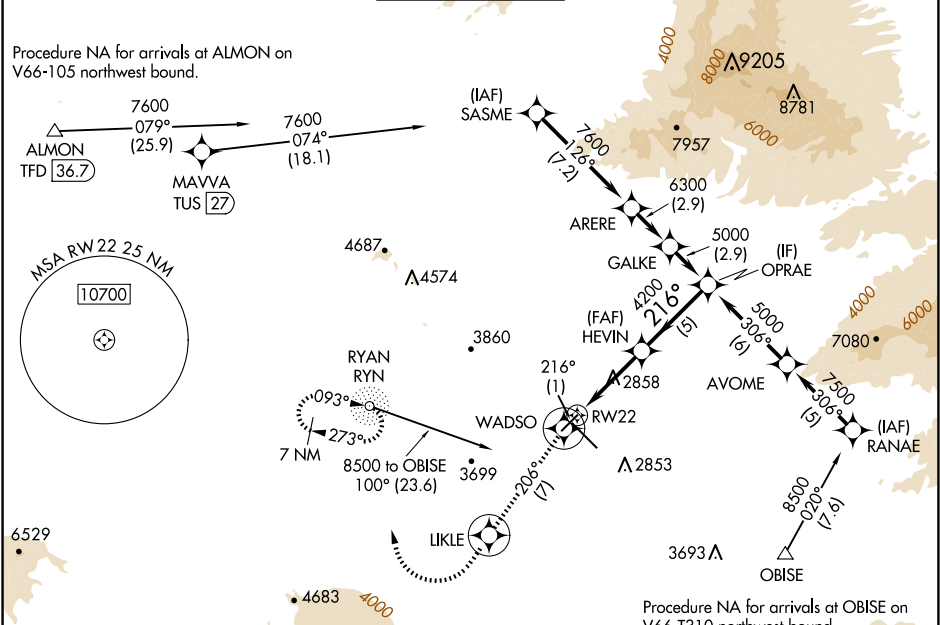
▼

▲

Rwy 22 helicopter visibility reduction below ¾ SM NA.
For uncompensated Baro-VNAV systems, LNAV/VNAV
NA below -2°C or above 54°C.

MISSED APPROACH: Climb to 6000 on track 216° to
WADSO and 206° track to LIKLE and right turn direct
RYN NDB and hold, continue climb-in-hold to 6000.

ATIS 123.8 279.65	TUCSON APP CON 119.4 318.1	TUCSON TOWER 118.3 257.8	GND CON 120.025 348.6	CLNC DEL 126.65 326.2
-----------------------------	--------------------------------------	------------------------------------	---------------------------------	---------------------------------



ELEV 2643

D

TDZE 2572

216°

6000

WADSO

206° tr

LIKLE

RYN

HEVIN

4200

1.7 NM to RW22

OPRAE

5000

GP 3.00°

TCH 50

1.7

3.2 NM

5 NM

CATEGORY	A	B	C	D
LNAV/VNAV	DA	3145-2	573 (600-2)	
LNAV MDA	3160-1	588 (600-1)	3160-1¾	588 (600-1¾)
CIRCLING	3160-1 517 (600-1)	3220-1 577 (600-1)	3220-1¾ 577 (600-1¾)	3660-3 1017 (1100-3)

HIRL Rwy 12-30

MIRL Rwy 4-22

REIL Rws 22 and 30