

TACAN Y RWY 31

DAVIS-MONTHAN AFB (KDMA)

TACAN DMA Chan 123	APCH CRS 302°	Rwy Idg 13,645 TDZE 2704 Arpt Elev 2704
------------------------------	-------------------------	--

[USAF]

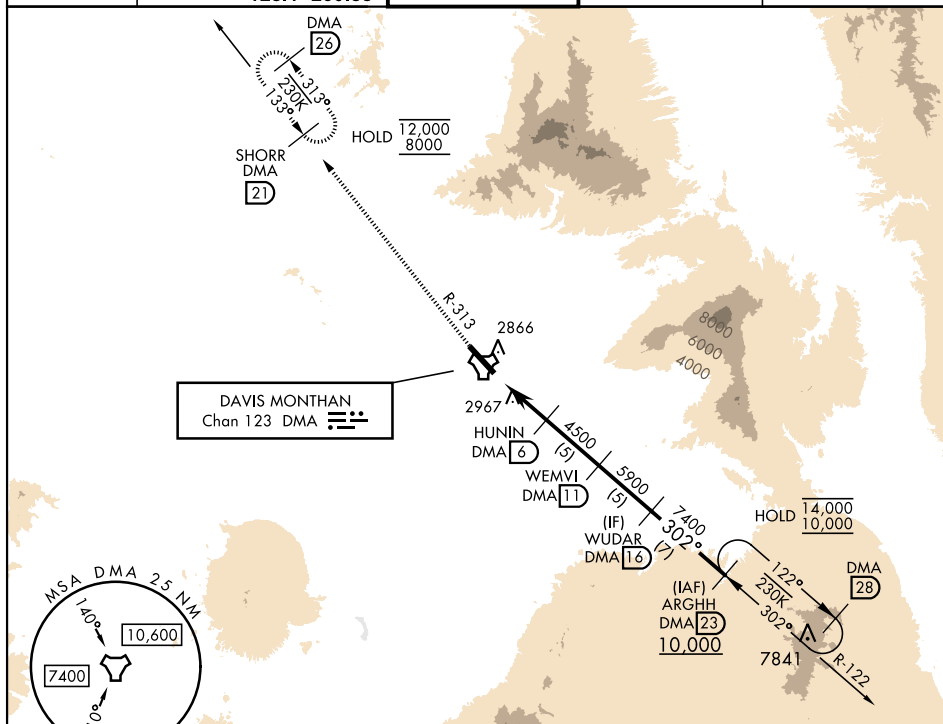
ALSF-1



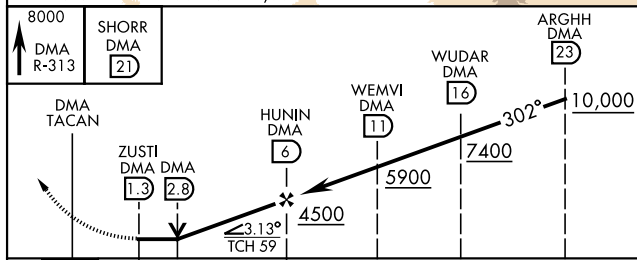
MISSED APPROACH: Climb to 8000, intercept DMA TACAN R-313 to SHORR and hold, continue climb-in-hold to 8000.

T * When ALS inop, increase CAT AB RVR to 55
vis to 1 mile; CAT CDE vis to 2 miles.
** Circling not authorized SW of Rwy 13-31.

ATIS★	TUCSON APP CON		TOWER		GND CON		CLNC DEL	
132.3 270.1	066°-274°	119.4 318.1						
	275°-065°	125.1 269.55	118.85	253.5	121.8	275.8	121.8	275.8



EMERG SAFE ALT 100 NM 17,000



	0.5 NM	4.7 NM				
CATEGORY	A	B	C	D	E	
S-31 *	3420/24 716 (800-½)		3420-1½ 716 (800-1%)			
C CIRCLING **	3420-1 716 (800-1)	3420-2 716 (800-2)	3420-2¼ 716 (800-2¼)	3460-2¾ 756 (800-2¾)		

TUCSON, ARIZONA

32°10'N-110°53'W

DAVIS-MONTHAN AFB (KDMA)

Orig 31OCT24

TACAN Y RWY 31

SW-4, 07 AUG 2025 to 04 SEP 2025

SW-4, 07 AUG 2025 to 04 SEP 2025