

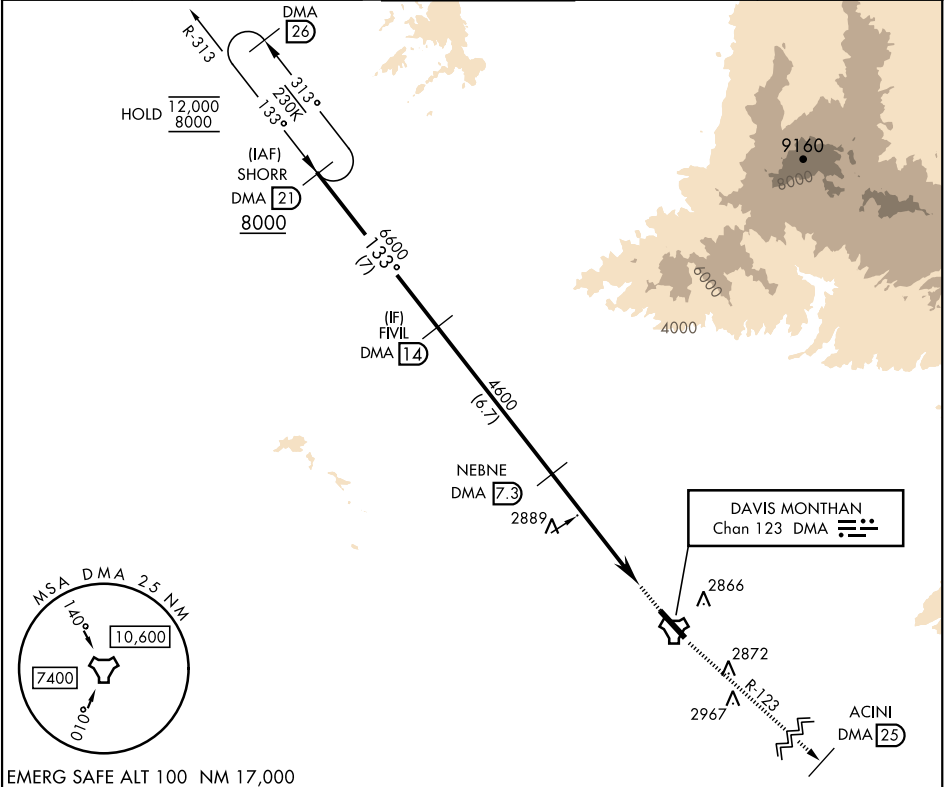
TACAN Y RWY 13

TACAN DMA	APCH CRS	Rwy Idg
Chan 123	133°	13,645
		TDZE 2615
		Arpt Elev 2704

[USAF]

DAVIS-MONTHAN AFB (KDMA)

RNAV or RADAR required.		MISSED APPROACH: Climb to 8000 intercept DMA TACAN R-123 to ACINI. Expect RADAR vectors.		
*Circling not authorized SW of Rwy 13-31.				
ATIS★	TUCSON APP CON	TOWER	GND CON	CLNC DEL
132.3 270.1	066°-274° 119.4 318.1 275°-065° 125.1 269.55	118.85 253.5	121.8 275.8	121.8 275.8



EMERG SAFE ALT 100 NM 17,000

<div>SHORR DMA 21</div> <div>8000</div>					<div>FIVIL DMA 14</div> <div>6600</div>					<div>NEBNE DMA 7.3</div> <div>4600</div>					<div>DMA 3.1</div> <div>ESALE DMA 2</div>					<div>DMA TACAN</div>					<div>8000</div> <div>DMA R-123</div>					<div>ACINI DMA 25</div>					<div>ELEV 2704</div>					<div>TDZE 2615</div>				
<div>133°</div>					<div>133°</div>					<div>3.17°</div> <div>TCH 58</div>					<div>0.5 NM</div>					<div>0.5 NM</div>					<div>133°</div>					<div>0.8 NM UP</div> <div>13.6°C × 200</div> <div>TWR</div>					<div>31</div> <div>A1</div>									
CATEGORY					A					B					C					D					E																			
S-13					3160/55					3160-1½					545					(500-1½)																								
CIRCLING*					3200-1					3220-1					3280-1½					3420-2¼					3460-2¾					HIRL Rwy 13-31					REIL Rwy 13									
					496 (500-1)					516 (600-1)					576 (600-1½)					716 (800-2¼)					756 (800-2¾)																			

TUCSON, ARIZONA

32°10'N-110°53'W

DAVIS-MONTHAN AFB (KDMA)

TACAN Y RWY 13

SW-4, 07 AUG 2025 to 04 SEP 2025

SW-4, 07 AUG 2025 to 04 SEP 2025