

TUCSON, ARIZONA

WAAS CH 71267 W31A	APCH CRS 308°	Rwy Idg TDZE Arprt Elev	13,645 2704 2704
--------------------------	------------------	-------------------------------	------------------------

- (USAF)

RNAV (GPS) RWY 31

DAVIS MONTHAN AFB (KDMA)

RNP APCH	ALSF-1	MISSED APPROACH: Climb to 8000 direct JAMRR and hold, continue climb-in-hold to 8000.
* When ALS inop, increase vis to 1 3/8 miles. ** When ALS inop, increase RVR to 45, vis to 7/8 mile.		

ATIS★ 132.3 270.1	TUCSON APP CON/DEP CON 119.4 269.55	TOWER 118.85 253.5	GND CON 121.8 275.8	CLNC DEL 121.8 275.8
----------------------	--	-----------------------	------------------------	-------------------------

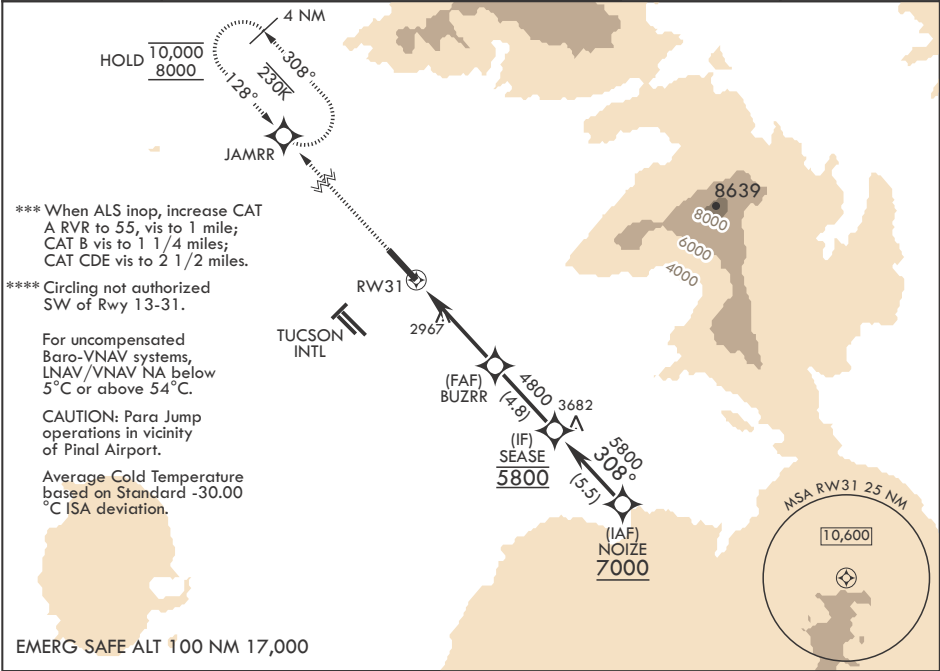


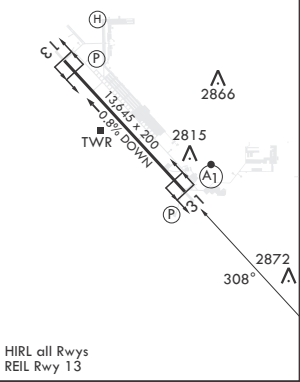
Diagram illustrating the approach path for RW31. The path is a straight line at 308° from SEASE. Key altitudes and distances are marked:

- Altitude at BUZZRR: 4800
- Altitude at SEASE: 5800
- Altitude at the end of the path: 7000
- Distance from RW31 to BUZZRR: 2.2 NM
- Distance from BUZZRR to the end of the path: 3.00 NM
- Distance from the start of the path to BUZZRR: 6.4 NM
- GP 3.00° TCH 59

CATEGORY	A	B	C	D	E
LPV DA*	3168/50		464	(500-1)	
LNAV/VNAV DA**	2966/24 262 (300-½)	2977/24 273 (300-½)	2985/24 281 (300-½)	2996/24	292 (300-½)
LNAV MDA***	3480/24 776 (800-½)	3480/40 776 (800-¾)	3480-1¾	776	(800-1¾)
CIRCLING****	3480-1 776 (800-1)	3480-1¼ 776 (800-1¼)	3480-2½ 776 (800-2½)	3480-2¾ 776 (800-2¾)	

Diagram illustrating the approach path for RW31, showing the path from the start to the runway. The path is a straight line at 308° from SEASE. Key altitudes and distances are marked:

- Altitude at the end of the path: 2872
- Distance from RW31 to BUZZRR: 2.2 NM
- Distance from BUZZRR to the end of the path: 3.00 NM
- Distance from the start of the path to BUZZRR: 6.4 NM
- GP 3.00° TCH 59



TUCSON, ARIZONA

Orig 28NOV24

32°10'N - 110°53'W

DAVIS MONTHAN AFB (KDMA)

RNAV (GPS) RWY 31

SW-4, 07 AUG 2025 to 04 SEP 2025

SW-4, 07 AUG 2025 to 04 SEP 2025