

ILS or LOC Y RWY 31

LOC I-DMA <u>109.3</u>	APCH CRS 308°	Rwy Idg 13,645 TDZE 2704 Arpt Elev 2704
----------------------------------	-------------------------	--

[USAF]

DAVIS-MONTHAN AFB (KDMA)

DME or RADAR required

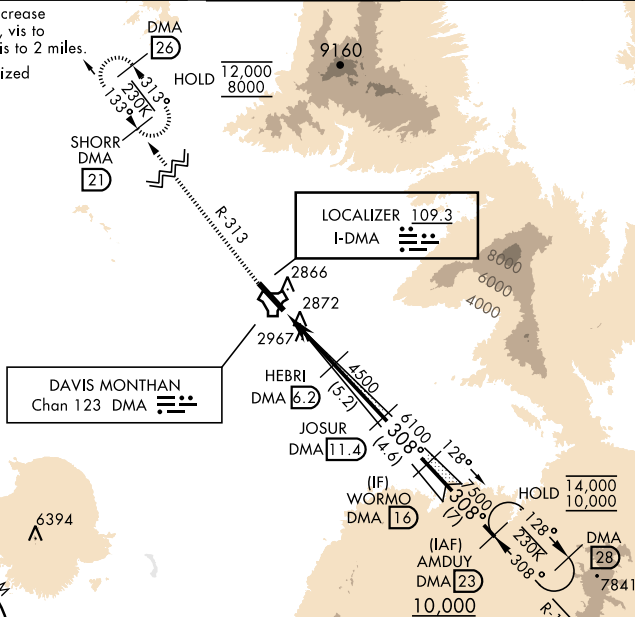
ALSF-1

MISSED APPROACH: Climb to 8000, intercept DMA TACAN R-313 to SHORR and hold, continue climb-in-hold to 8000.

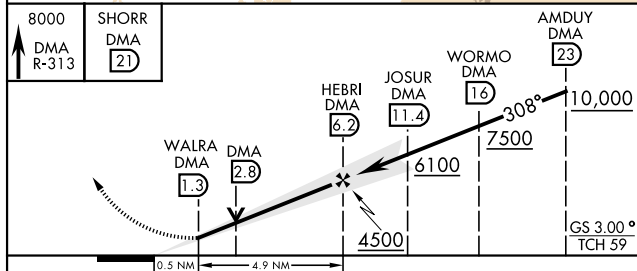
T * When ALS inop, increase RVR to 40, vis to ¾ mile.

ATIS★	TUCSON APP CON	TOWER	GND CON	CLNC DEL
132.3 270.1	066°-274° 119.4 318.1 275°-065° 125.1 269.55	118.85 253.5	121.8 275.8	121.8 275.8

** When ALS inop, increase
 CAT AB RVR to 55, vis to
 1 mile; CAT CDE vis to 2 miles.
 *** Circling not authorized
 SW of Rwy 13-31.

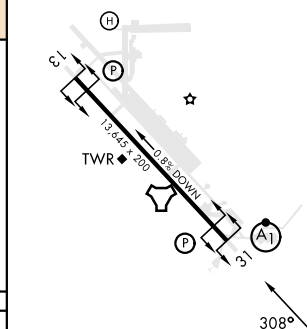


EMERG SAFE ALT 100 NM 17,000



CATEGORY	A	B	C	D	E
S-ILS 31 *	2904/24 200 (200-½)				
S-LOC 31 **	3400/24 696 (700-½)	3400-1½ 696 (700-1½)			
CIRCLING ***	3400-1 696 (700-1)	3400-2 696 (700-2)	3420-2½ 716 (800-2½)	3460-2¾ 756 (800-2¾)	

ELEV	2704	TDZE	2704
------	------	------	------



HIRL Rwy 13-31
REIL Rwy 13

FAF to MAP 4.9 NM

Knots	60	90	120	150	180
Min:Sec	4:54	3:16	2:27	1:58	1:38

TUCSON, ARIZONA

32°10'N-110°53'W

DAVIS-MONTHAN AFB (KDMA)

Orig 31OCT24

ILS or LOC Y RWY 31

SW-4, 07 AUG 2025 to 04 SEP 2025

SW-4, 07 AUG 2025 to 04 SEP 2025