

TUCSON, ARIZONA

## ILS or LOC Y RWY 13

LOC I-AFB <b><u>109.3</u></b>	APCH CRS <b>128°</b>	Rwy Idg <b>13,645</b> TDZE <b>2615</b> Arpt Elev <b>2704</b>
----------------------------------	-------------------------	--------------------------------------------------------------------

[USAF]

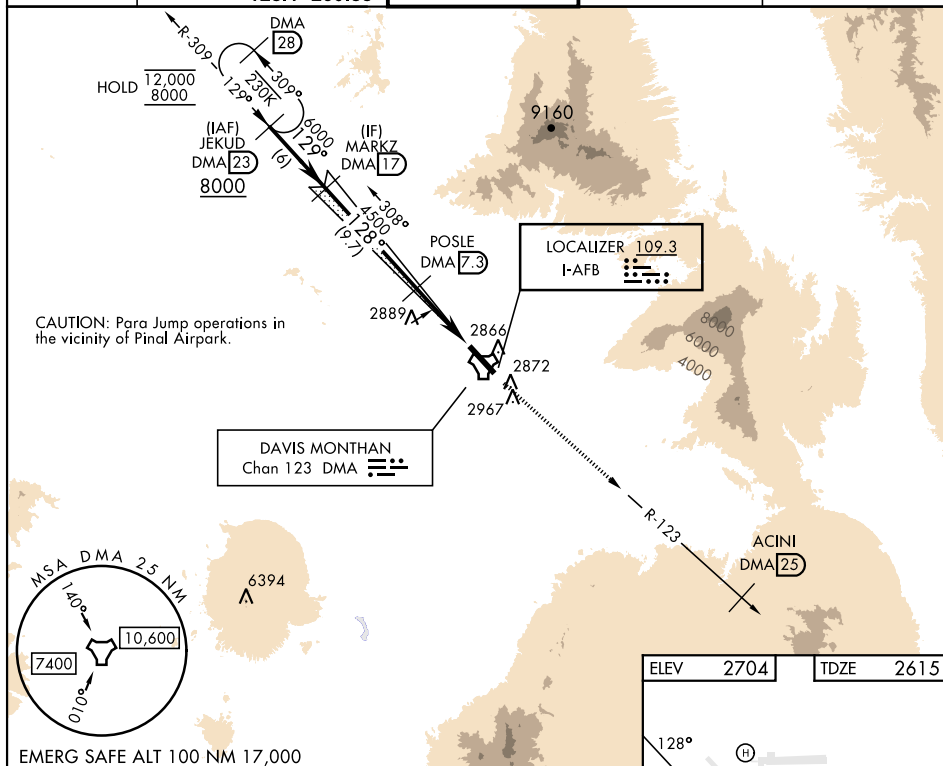
DAVIS-MONTHAN AFB (KDMA)

DME or RADAR required

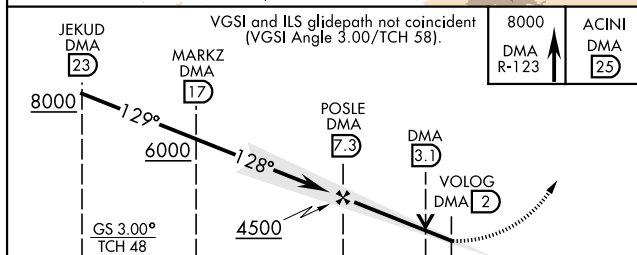
**T** \* Circling not authorized SW of Rwy 13-31.




**MISSED APPROACH:** Climbing to 8000 intercept DMA TACAN R-123 to ACINI. Expect RADAR vectors.

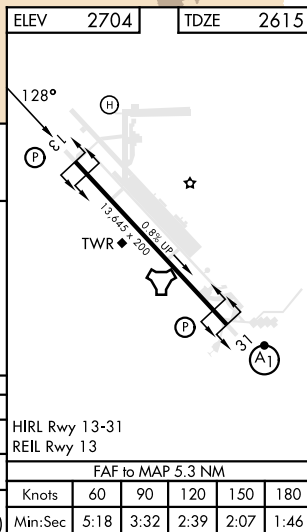
ATIS★	TUCSON APP CON	TOWER	GND CON	CLNC DEL
132.3 270.1	066°-274° 119.4 318.1 275°-065° 125.1 269.55	118.85 253.5	121.8 275.8	121.8 275.8



EMERG SAFE ALT 100 NM 17.000



					
CATEGORY	A	B	C	D	E
S-ILS 13	2815/40 200 (200-¾)				
S-LOC 13	3160/55	545 (500-1)	3160-1½ 545 (500-1½)		
 CIRCLING*	3200-1 496 (500-1)	3220-1 516 (600-1)	3280-1½ 576 (600-1½)	3420-2¼ 716 (800-2¼)	3460-2¾ 756 (800-2¾)



TUCSON, ARIZONA

32°10'N-110°53'W

DAVIS-MONTHAN AFB (KDMA)

Orig 31OCT24

ILS or LOC Y RWY 13

SW-4, 07 AUG 2025 to 04 SEP 2025

SW-4, 07 AUG 2025 to 04 SEP 2025