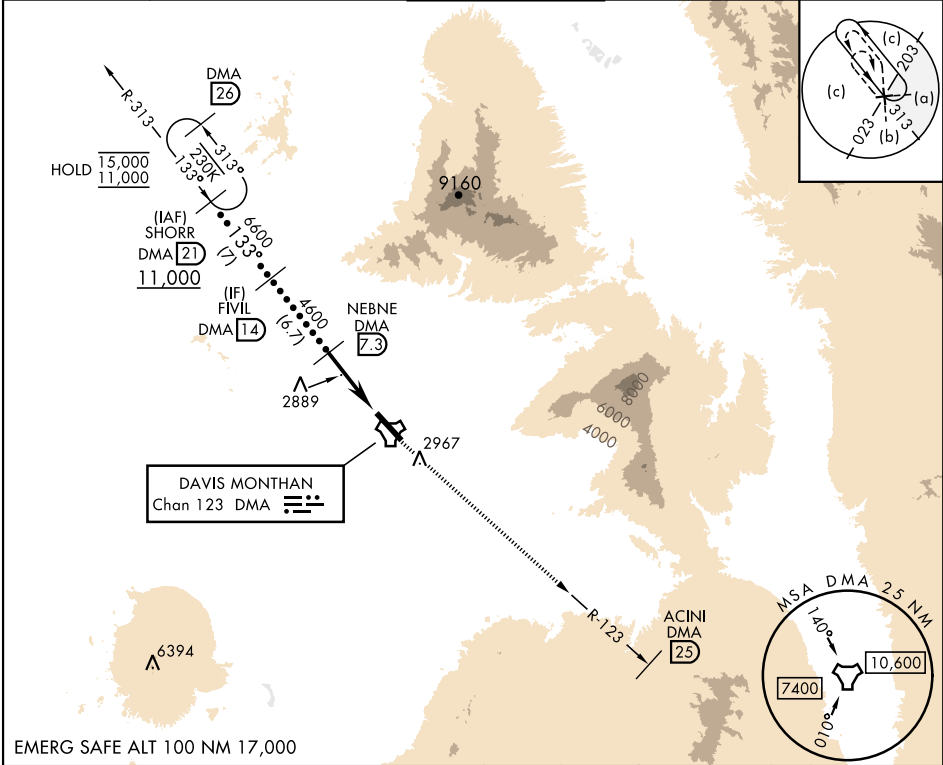


TACAN DMA Chan 123	APCH CRS 133°	Rwy Idg 13,645 TDZE 2615 Arpt Elev 2704	[USAF]	DAVIS-MONTHAN AFB (KDMA)
RNAV or RADAR required.			MISSED APPROACH: Climbing to 8000 intercept DMA TACAN R-123 to ACINI. Expect RADAR vectors.	
▼ *Circling not authorized SW of Rwy 13-31.				

ATIS★ 132.3 270.1	TUCSON APP CON 066°-274° 119.4 318.1 275°-065° 125.1 269.55	TOWER 118.85 253.5	GND CON 121.8 275.8	CLNC DEL 121.8 275.8
-----------------------------	---	------------------------------	-------------------------------	--------------------------------



<div><div>SHORR DMA 21</div><div>11,000</div></div> <div><div>FIVIL DMA 14</div><div>6600</div></div> <div><div>NEBNE DMA 7.3</div><div>4600</div></div> <div><div>DMA 3.1</div><div>ESALE DMA 2</div></div> <div><div>DMA TACAN</div></div>				<div>8000 DMA R-123</div> <div>ACINI DMA 25</div>		<div>ELEV 2704</div> <div>TDZE 2615</div>	
<div>133°</div> <div>6600</div> <div>4600</div> <div>3.17°</div> <div>TCH 58</div> <div>5.3 NM</div> <div>0.5 NM</div>				<div>133°</div> <div>5.1</div> <div>0.8 NM</div> <div>13.045 × 200</div> <div>TWR</div> <div>31</div> <div>A1</div>			
CATEGORY		C		D		E	
S-13		3160-1½		545 (500-1½)			
CIRCLING*		3280-1½ 576 (600-1½)		3420-2¼ 716 (800-2¼)		3460-2¾ 756 (800-2¾)	
						HIRL Rwy 13-31 REIL Rwy 13	