

APP CRS 215°	Rwy Idg 5500
TDZE 5757	
Apt Elev 5762	

RNAV (GPS) RWY 21

PERRY STOKES (TAD)

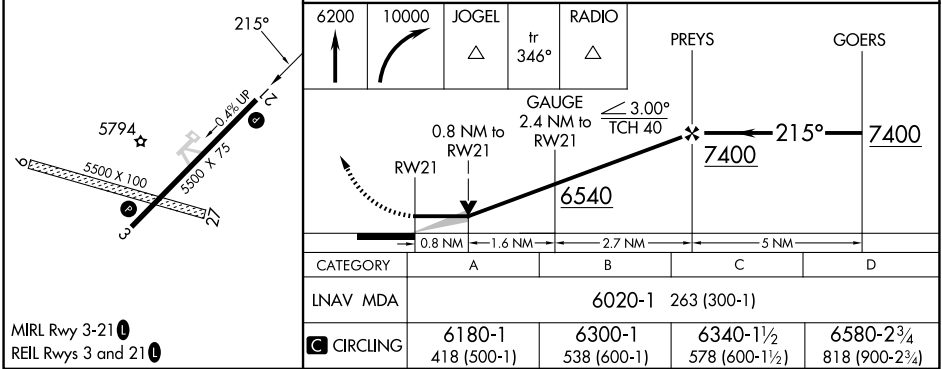
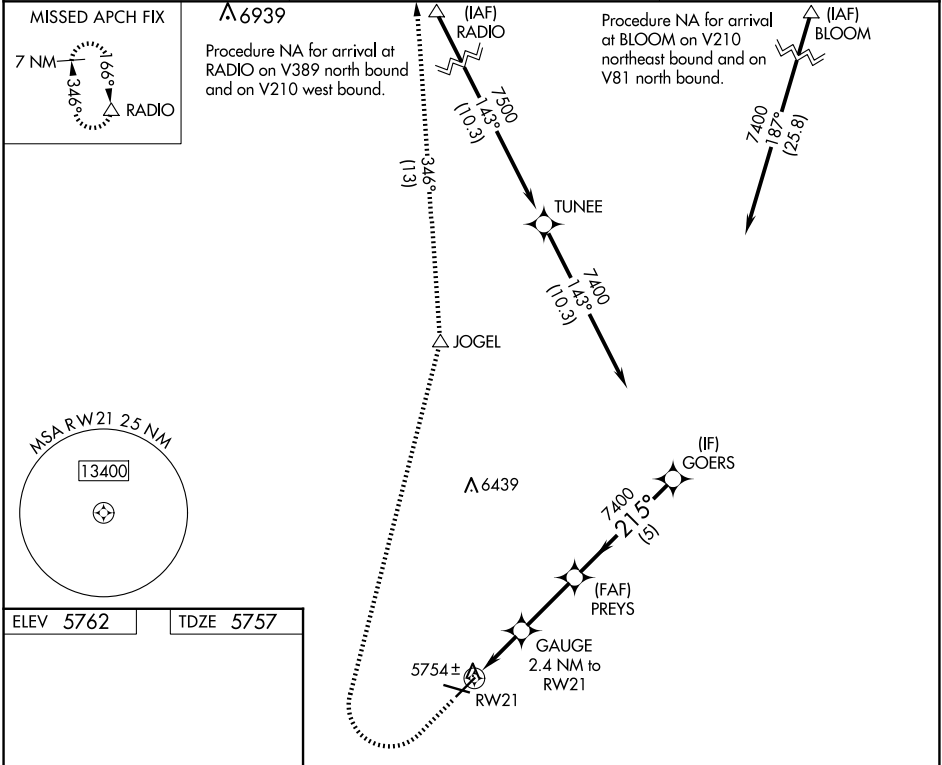
⚠

⚠

Circling NA to Rwy 9 and 27. DME/DME RNP-0.3 NA. When local altimeter setting not received, use Pueblo altimeter setting and increase all MDA 300 feet: increase LNAV Cat C/D visibility ½ SM, Circling Cat B/D visibility ¼ SM and Circling Cat C visibility 1 SM. VDP NA when using Pueblo altimeter setting.

MISSED APPROACH: Climb to 6200 then climbing right turn to 10000 direct JOGEL and on track 346° to RADIO and hold.

ASOS 119.025	DENVER CENTER 128.375 379.95	UNICOM 122.8 (CTAF) 0
------------------------	--	---------------------------------



SW-1, 07 AUG 2025 to 04 SEP 2025

SW-1, 07 AUG 2025 to 04 SEP 2025