

LOC I-BON	APP CRS	Rwy Idg	8000
111.5	050°	TDZE	1498
		Apt Elev	1519

ILS or LOC RWY 5

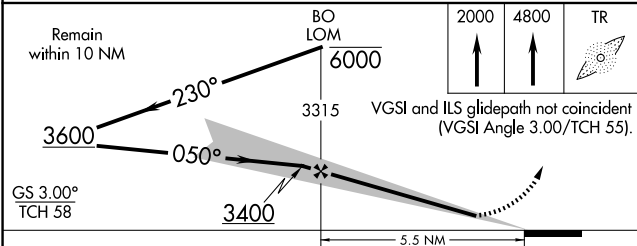
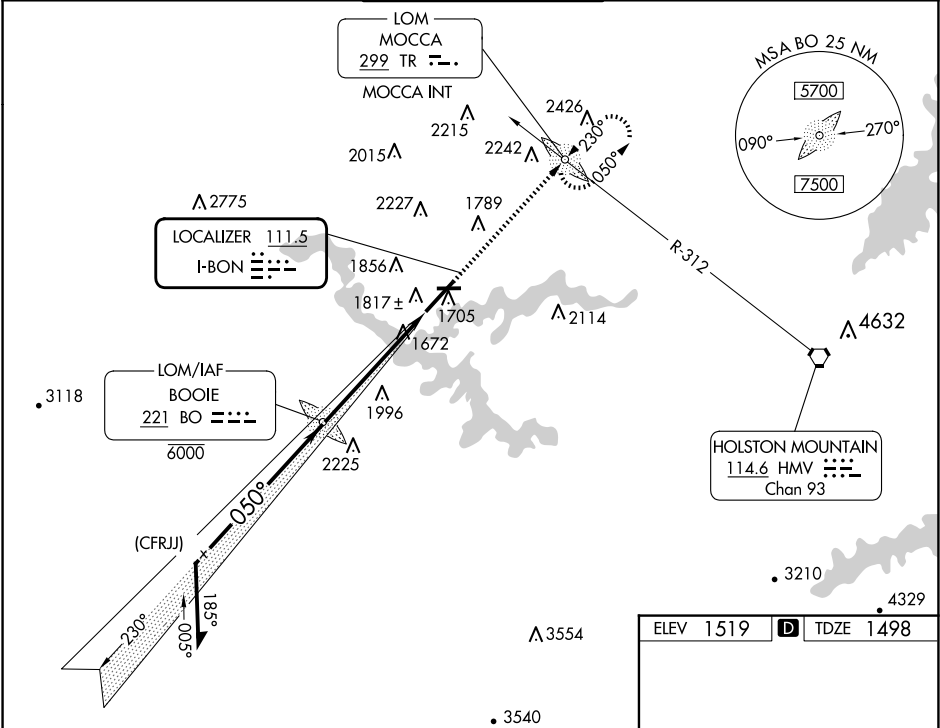
TRI-CITIES (TRI)

ADF required. RADAR required for procedure entry.

Circling to Rwy 9 NA at night. Circling NA northwest of Rwy 9 and 23. Autopilot coupled approach NA below 2200. Procedure NA when control tower closed.

MISSED APPROACH: Climb to 2000 then climb to 4800 direct MOCCA LOM INT and hold, continue climb-in-hold to 4800.

ATIS	TRI-CITY APP CON ★	TRI-CITY TOWER ★	GND CON	UNICOM
118.25	134.425 349.0	119.5 (CTAF) 257.8	121.7 348.6	122.95



CATEGORY	A	B	C	D
S-ILS 5	1698/40 200 (200-3/4)			
S-LOC 5	2100/55	602 (600-1)	2100-1 3/4	602 (600-1 3/4)
CIRCLING	2120-1 601 (700-1)	2180-1 661 (700-1)	2320-2 1/4 801 (900-2 1/4)	2500-3 981 (1000-3)

