

LOC I-TRI 109.9	APP CRS 230°	Rwy Idg TDZE Apt Elev	8000 1518 1519
---------------------------	------------------------	-----------------------------	---

ILS or LOC RWY 23

TRI-CITIES (TRI)

ADF or RADAR required.

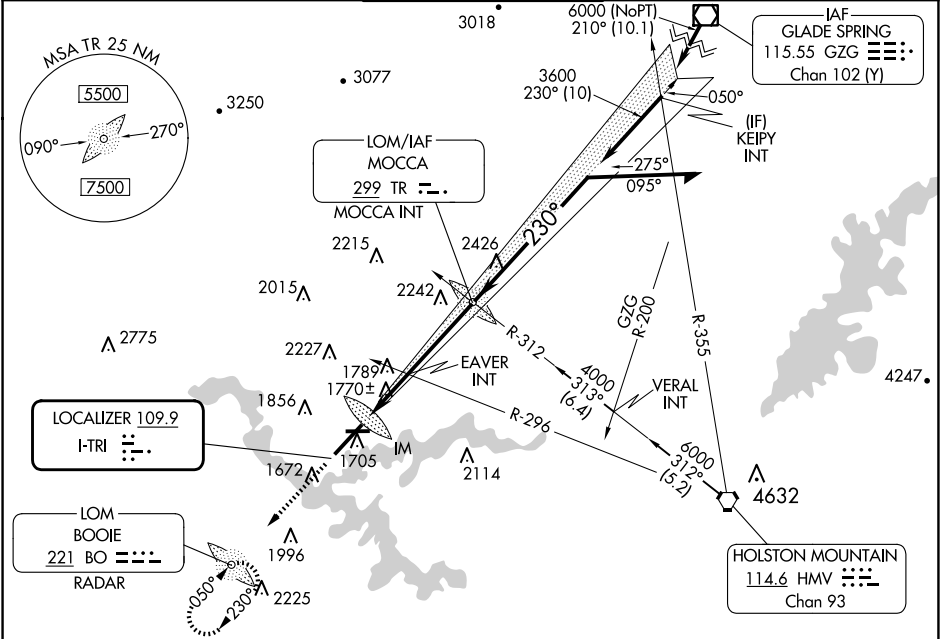
⚠

Circling to Rwy 9 NA at night. Circling NA northwest of Rwy 9 and 23. CAUTION: Air traffic control tower 1634 feet MSL located 940 feet right of runway centerline 357 feet from runway threshold. When control tower closed: S-ILS 23 increase visibilities to RVR 4000 all Cats and S-LOC 23 increase visibilities ½ SM all Cats.

ALSF-2

MISSED APPROACH: Climb to 3800 direct BOOIE LOM/ RADAR and hold.

ATIS 118.25	TRI-CITY APP CON ★ 134.425 349.0	TRI-CITY TOWER ★ 119.5 (CTAF) 257.8	GND CON 121.7 348.6	UNICOM 122.95
-----------------------	--	---	-------------------------------	-------------------------



ELEV 1519	D	TDZE 1518	3800	BO
<div><div><div>230°</div><div>1618</div><div>4443 X</div><div>150</div><div>TWR 1634</div><div>REIL Rwy 5 and 27</div><div>TDZ/CL Rwy 23</div><div>HIRL Rwy 5-23</div><div>MIRL Rwy 9-27</div><div>FAF to MAP 6 NM</div></div><div><div>3800</div><div>BO</div><div>*LOC only.</div><div>230°</div><div>1618</div><div>4443 X</div><div>150</div><div>TWR 1634</div><div>REIL Rwy 5 and 27</div><div>TDZ/CL Rwy 23</div><div>HIRL Rwy 5-23</div><div>MIRL Rwy 9-27</div><div>FAF to MAP 6 NM</div></div></div>				
<div><div>TR LOM/INT</div><div>3509</div><div>050°</div><div>4000</div><div>230°</div><div>3600</div><div>GS 3.00°</div><div>TCH 56</div></div>				
CATEGORY	A	B	C	D
S-ILS 23	1718/18 200 (200-½)			
S-LOC 23	2500/40 982 (1000-¾)	2500-1 982 (1000-1)	2500-2½ 982 (1000-2½)	
CIRCLING	2500-1¼ 981 (1000-1¼)	2500-1½ 981 (1000-1½)	2500-3 981 (1000-3)	
EAVR FIX MINIMUMS (DUAL VOR RECEIVERS REQUIRED)				
S-LOC 23	2020/24 502 (600-½)	2020/55 502 (600-1)		
CIRCLING	2120-1 601 (700-1)	2180-1 661 (700-1)	2320-2¼ 801 (900-2¼)	2500-3 981 (1000-3)