

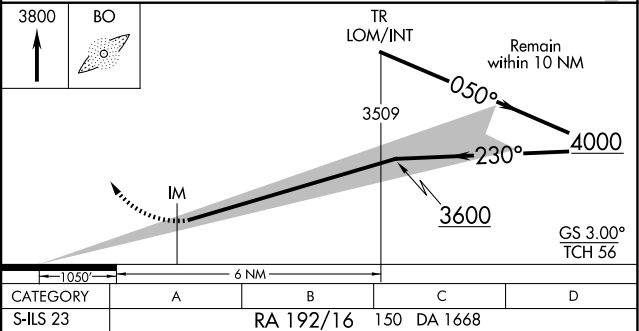
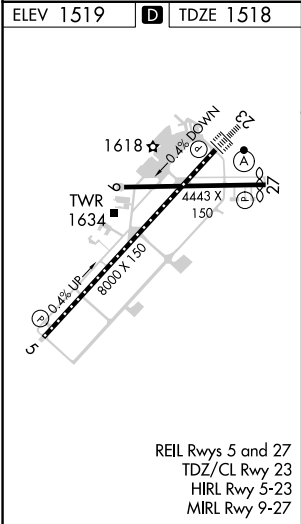
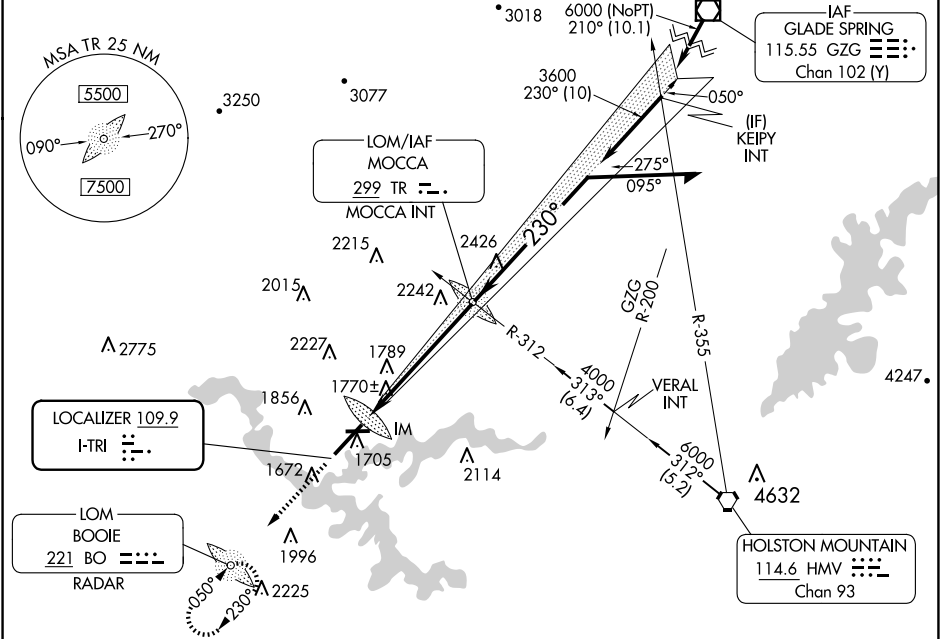
ADF or RADAR required.

Requires specific OPSPEC, MSPEC, or LOA approval and use of HUD to DH. CAUTION:
Air traffic control tower 1634 feet MSL located 940 feet right of runway centerline
357 feet from runway threshold. Procedure NA when tower closed.

ALSF-2
A

MISSED APPROACH: Climb to 3800 direct BOOIE LOM/ RADAR and hold.

ATIS 118.25	TRI-CITY APP CON ★ 134.425 349.0	TRI-CITY TOWER ★ 119.5 (CTAF) 257.8	GND CON 121.7 348.6	UNICOM 122.95
----------------	-------------------------------------	--	------------------------	------------------



SA CATEGORY I ILS - SPECIAL AIRCREW
& AIRCRAFT CERTIFICATION REQUIRED

SE-1, 07 AUG 2025 to 04 SEP 2025

SE-1, 07 AUG 2025 to 04 SEP 2025