

VOR/DME TVC <b>114.6</b> Chan <b>93</b>	APP CRS <b>345°</b>	Rwy Ldg TDZE Apt Elev <b>624</b>	<b>N/A</b> <b>N/A</b> <b>624</b>
---	------------------------	---	--

VOR-A  
CHERRY CAPITAL (TVC)

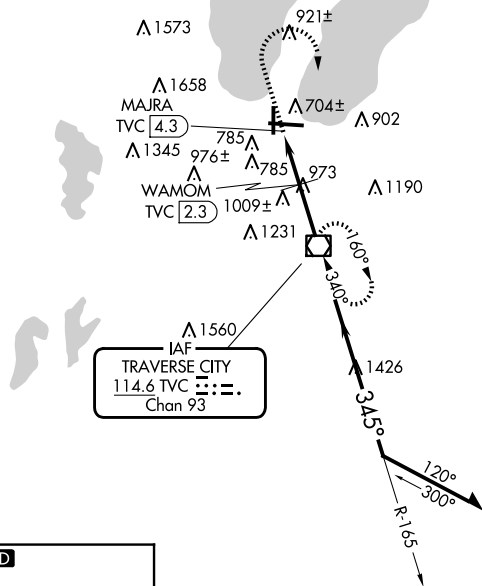
**T**  
**A**

When local altimeter setting not received, use Bellaire altimeter setting and increase all MDA 60 feet and all Cat C visibility ¼ mile.

 -21°C

**MISSED APPROACH:** Climb to 1800 then climbing right turn to 3000 direct TVC VOR/DME and hold.

ATIS 119.175	MINNEAPOLIS CENTER 132.9 338.3	TRAVERSE CITY TOWER ★ 124.2 (CTAF) 0 348.6	GND CON 121.8 348.6	UNICOM 122.95
-----------------	-----------------------------------	---	------------------------	------------------



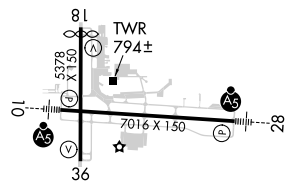
2049  
A

MSA IVC 23 NM

3600

ELEV 624

**D**



HIRL Rwy 10-28 **L**  
MIRL Rwy 18-36 **L**  
REIL Rwy 36 **L**

FAF to MAP 4.3 NM

Knots	60	90	120	150	180
Min:Sec	4:18	2:52	2:09	1:43	1:26

TRAVERSE CITY, MICHIGAN

Amdt 21A 18MAY23

44°44'N-85°35'W

## CHERRY CAPITAL (TVC)

VOR-A

EC-1, 07 AUG 2025 to 04 SEP 2025

EC-1, 07 AUG 2025 to 04 SEP 2025