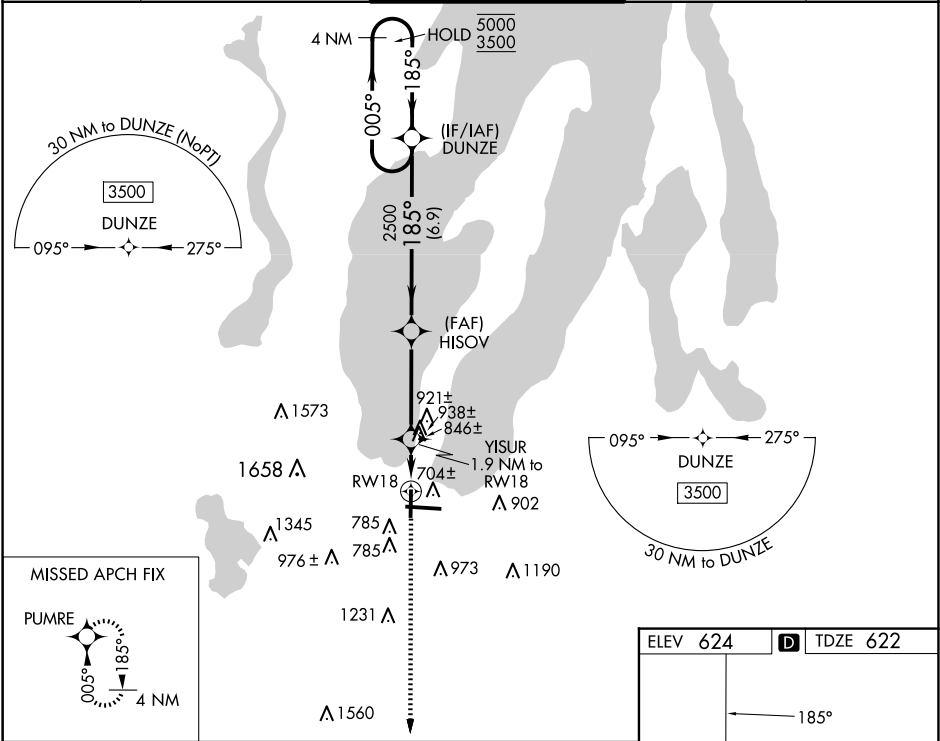


WAAS CH 90335 W18A	APP CRS 185°	Rwy Ldg TDZE 622 Apt Elev 624
----------------------------------------	------------------------	---------------------------------------------------

RNAV (GPS) RWY 18

CHERRY CAPITAL (TV'C)

RNP APCH - GPS.		MISSED APPROACH: Climb to 3000 direct PUMRE and hold.		
<div><div><div>V</div><div>A</div><div>☼</div></div><div>-21°C</div></div>	Rwy 18 helicopter visibility reduction below ¾ SM NA.			
ATIS 119.175	MINNEAPOLIS CENTER 132.9 338.3	TRAVERSE CITY TOWER★ 124.2 (CTAF) 0 348.6	GND CON 121.8 348.6	UNICOM 122.95



4 NM Holding Pattern		Visual Segment - Obstacles.		3000	PUMRE
5000 3500		DUNZE			
← 005°		185° →			
		185°			
		2500			
		1260			
		RW18			
		6.9 NM			
		3.9 NM			
		0.5			
		1.4			
CATEGORY	A	B	C	D	
LP MDA	1100-1	478 (500-1)	1100-1¾	478 (500-1¾)	
LNAV MDA	1200-1	578 (600-1)	1200-1½	578 (600-1½)	
CIRCLING	1200-1 576 (600-1)	1260-1 636 (700-1)	1500-2½ 876 (900-2½)	1720-3 1096 (1100-3)	

