

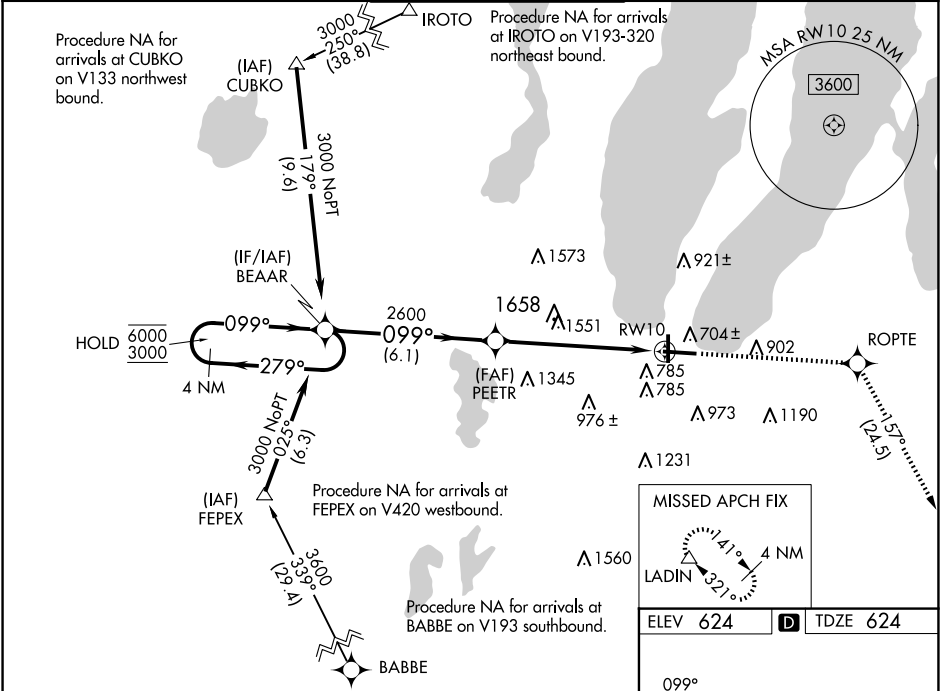
WAAS CH 42610 W10A	APP CRS 099°	Rwy Ldg TDZE 624 Apt Elev 624
--	------------------------	---

RNAV (GPS) RWY 10

CHERRY CAPITAL (TVC)

RNP APCH.	For uncompensated Baro-VNAV systems, LNAV/VNAV NA below -19°C (-2°F) or above 54°C (130°F). Rwy 10 helicopter visibility reduction below ¾ SM NA. For inop ALS, increase LPV visibility all Cats ½ SM. Inop table does not apply to LNAV/VNAV all Cats and LNAV Cats C/D.	MALSR 	MISSED APPROACH: Climb to 4000 direct ROPTe and on track 157° to LADIN and hold.
-----------	---	-----------	--

ATIS 119.175	MINNEAPOLIS CENTER 132.9 338.3	TRAVERSE CITY TOWER* 124.2 (CTAF) 0 348.6	GND CON 121.8 348.6	UNICOM 122.95
------------------------	--	---	-------------------------------	-------------------------



4 NM Holding Pattern		BEAAR	PEETR	ROPTe	tr 157°	LADIN
6000 ← 279°		099° →	099°	4000	4000	4000
3000		GP 3.00° TCH 52	2600	*3.4 NM to RWY 10	*LNAV only.	RWY 10
		6.1 NM	2.6 NM	3.4 NM		
CATEGORY	A	B	C	D		
LPV DA		909-¾	285 (300-¾)			
LNAV/VNAV DA		1983-5	1359 (1400-5)			
LNAV MDA	1780-¾ 1156 (1200-¾)	1780-1 1156 (1200-1)	1780-3	1156 (1200-3)		
CIRCLING	1780-1¼ 1156 (1200-1¼)	1780-1½ 1156 (1200-1½)	1780-3	1156 (1200-3)		

