


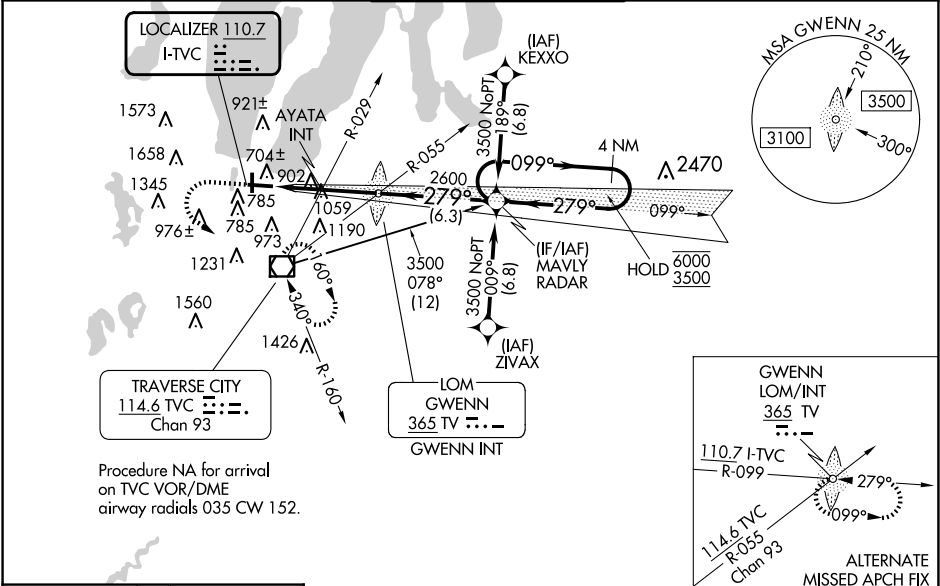


LOC I-TVC 110.7	APP CRS 279°	Rwy Ldg 7016 TDZE 616 Apt Elev 624
---------------------------	------------------------	--

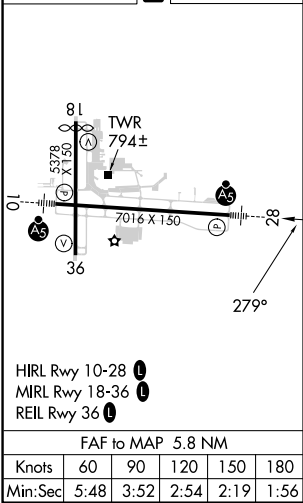
ILS or LOC RWY 28
CHERRY CAPITAL (TVC)


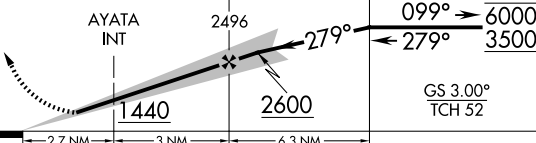


RNP APCH - GPS.	MALSR 	MISSED APPROACH: Climb to 1100 then climbing left turn to 3000 direct TVC VOR/DME and hold, continue climb-in-hold to 3000.
Aircraft not GPS equipped - RADAR required for procedure entry.		
 S-LOC 28 minimums: For inop ALS, increase S-LOC 28 Cats C and D visibility to 2 1/2 SM. AYATA FIX minimums: For inop ALS, increase S-LOC 28 Cats C and D visibility to 2 SM.  -21°C		

ATIS 119.175	MINNEAPOLIS CENTER 132.9 338.3	TRAVERSE CITY TOWER ★ 124.2 (CTAF) 348.6	GND CON 121.8 348.6	UNICOM 122.95
------------------------	--	--	-------------------------------	-------------------------



ELEV 624 D TDZE 616



1100 ↑	3000 ↷	TVC 	VGSI and ILS glidepath not coincident (VGSI Angle 3.00/TCH 45).	
		TV LOM GWENN INT	MAYLY RADAR	4 NM Holding Pattern
				
CATEGORY	A	B	C	D
S-ILS 28	816- $\frac{1}{2}$ 200 (200- $\frac{1}{2}$)			
S-LOC 28	1440- $\frac{1}{2}$ 824 (900- $\frac{1}{2}$)	1440- $\frac{3}{4}$ 824 (900- $\frac{3}{4}$)	1440-1 $\frac{7}{8}$ 824 (900-1 $\frac{7}{8}$)	824 (900-1 $\frac{1}{2}$)
 CIRCLING	1440-1 $\frac{1}{4}$	816 (900-1 $\frac{1}{4}$)	1440-2 $\frac{1}{2}$ 816 (900-2 $\frac{1}{2}$)	1720-3 1096 (1100-3)
AYATA FIX MINIMUMS (DUAL VOR RECEIVERS REQUIRED)				
S-LOC 28	1320- $\frac{1}{2}$	704 (700- $\frac{1}{2}$)	1320-1 $\frac{5}{8}$	704 (700-1 $\frac{5}{8}$)
 CIRCLING	1320-1	696 (700-1)	1420-2 $\frac{1}{4}$ 796 (800-2 $\frac{1}{4}$)	1720-3 1096 (1100-3)

EC-1, 07 AUG 2025 to 04 SEP 2025

EC-1, 07 AUG 2025 to 04 SEP 2025