

LOC/DME I-TYK
110.7
Chan **44**

APP CRS
099°

Rwy Ldg
TDZE **624**
Apt Elev **624**

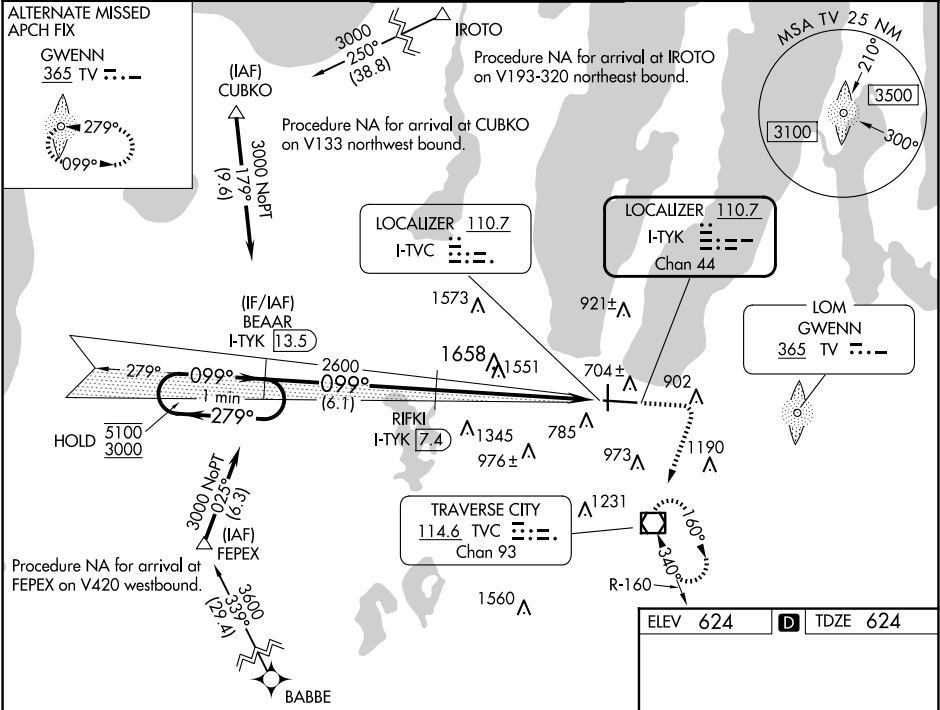
ILS or LOC RWY 10
CHERRY CAPITAL (TVC)

RNP APCH - GPS. From BABBE, or IROTO, or FEPEX, or CUBKO.
DME required.

MALSR

MISSED APPROACH: Climb to 1400 then climbing right turn to 4000 direct TVC VOR/DME and hold, continue climb-in-hold to 4000.

ATIS 119.175	MINNEAPOLIS CENTER 132.9 338.3	TRAVERSE CITY TOWER* 124.2 (CTAF) 0 348.6	GND CON 121.8 348.6	UNICOM 122.95
------------------------	--	---	-------------------------------	-------------------------



One Minute Holding Pattern BEAAR I-TYK 13.5

VGSI and ILS glidepath not coincident (VGSI Angle 3.00/TCH 55).

1400 4000 TVC

5100 3000 279° 099° 099°

GS 3.00° TCH 60

2600 2600 2600

6.1 NM 2.8 NM 3.2 NM

CATEGORY	A	B	C	D
S-ILS 10	917-3/4 293 (300-3/4)			
S-LOC 10	1700-3/4 1076 (1100-3/4)	1700-1 1076 (1100-1)	1700-2 1/2 1076 (1100-2 1/2)	
CIRCLING	1700-1 1/4 1076 (1100-1 1/4)	1700-1 1/2 1076 (1100-1 1/2)	1700-3 1076 (1100-3)	1720-3 1096 (1100-3)

ELEV 624 TDZE 624

81 TWR 794±

5378 X 1150

7016 X 150

36

HIRL Rwy 10-28

MIRL Rwy 18-36

REIL Rwy 36