


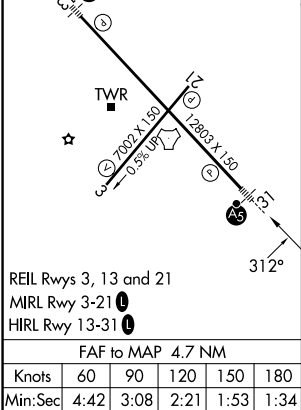
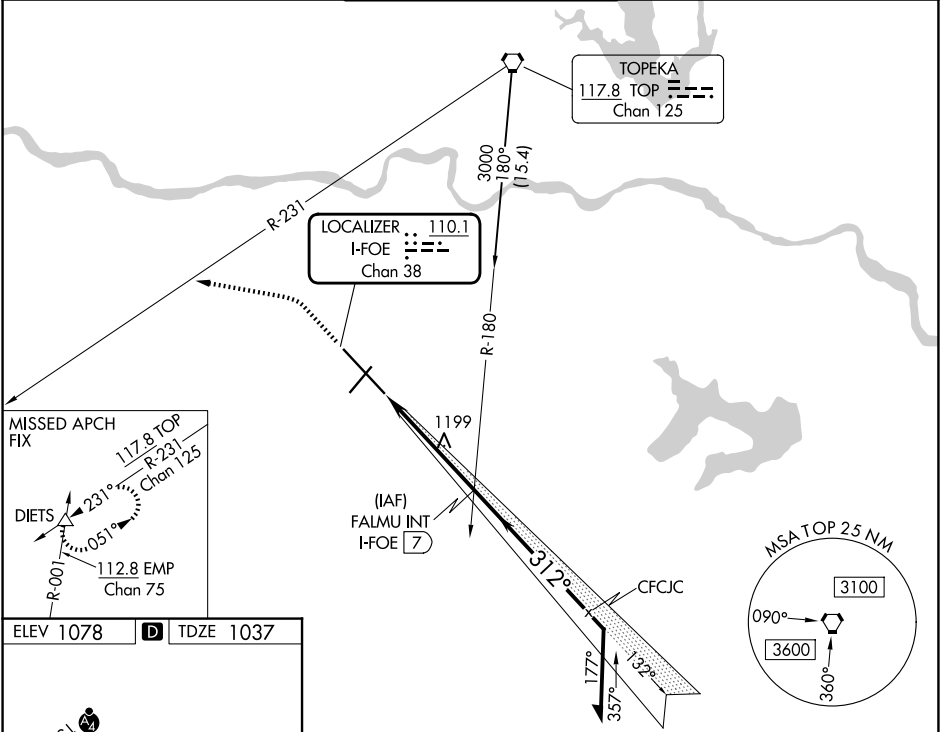


LOC/DME I-FOE	APP CRS	Rwy Ldg	12803
110.1	312°	TDZE	1037
Chan 38		Apt Elev	1078

ILS or LOC RWY 31
TOPEKA RGNL (F O E)

RADAR required for Cat E for procedure entry.		<div>MALSR</div> <div></div>	<div>MISSED APPROACH: Climb to 1900 then climbing left turn to 3700 on heading 275° and on TOP VORTAC R-231 to DIETS INT and hold.</div>
<div></div>	<div>For inop ALS, increase S-ILS Cat E visibility to RVR 4000 and S-LOC Cat E visibility to 1¼ SM.</div>		
<div></div>	<div>*RVR 1800 authorized with use of FD or AP or HUD to DA.</div>		

ATIS	KANSAS CITY CENTER	FORBES TOWER*	GND CON	UNICOM
128.25	123.8 343.7	120.8 (CTAF) 0 340.2	118.425 275.8	122.95



1900	3700	TOP	DIETS	FALMU INT	Remain within 10 NM
↑	hdg 275°	R-231	△	I-FOE [7]	
Cat E procedure turn NA.					
I-FOE [2.3] I-FOE [3.4] 2600 3000 132° 312° 2600					
1.2 NM 3.6 NM GS 3.00° TCH 58					
CATEGORY	A	B	C	D	E
S-ILS 31*	1237/24 200 (200-½)				
S-LOC 31	1460/24	423 (400-½)	1460/40	423 (400-¾)	
CIRCLING	1520-1 442 (500-1)	1580-1 502 (600-1)	1580-1½ 502 (600-1½)	1700-2 622 (700-2)	1720-2¼ 642 (700-2¼)