

TACAN Chan **53**

FOE

APCH CRS **304°**

Rwy ldg **12,803**  
TDZE **1037**  
Arprt Elev **1078**

[USAF]

TOPEKA RGNL (KFOE)

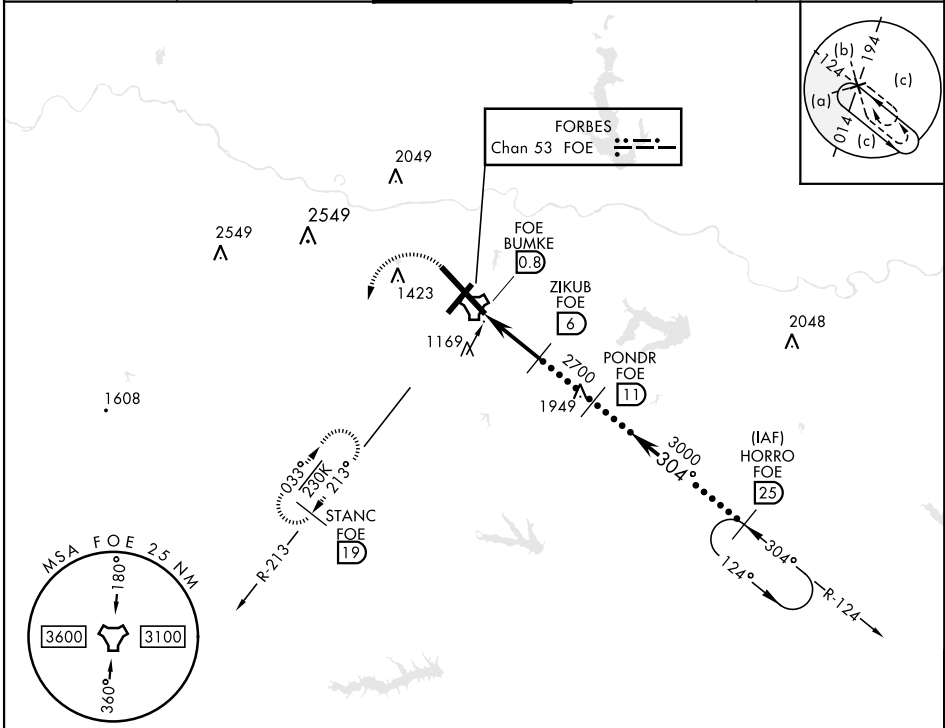
T

\* When ALS inop, increase CAT CDE vis to 1½ miles.

MALSR

MISSED APPROACH: Climbing left turn to 3000 via heading 190° and FOE TACAN R-213 to STANC/19 DME and hold.

ATIS <b>128.25</b>	KANSAS CITY CENTER <b>123.8 343.7</b>	FORBES TOWER ★ <b>120.8 (CTAF) 340.2</b>	GND CON <b>118.425 275.8</b>	UNICOM <b>122.95</b>
-----------------------	--	---	---------------------------------	-------------------------



EMERG SAFE ALT 100 NM 3600

3000 FOE R-213	STANC FOE 19	PONDNR FOE 11		HORRO FOE 25	ELEV 1078 D TDZE 1037
TACAN FOE		FOE BUMKE 0.8	ZIKUB FOE 6	FL250 10,000	Rwy 3 ldg 7001' Rwy 21 ldg 7001'
5.2 NM		2700	3000	304°	TWR 1208
CATEGORY	C	D	E		
S-31*	1520/50 483 (500-1)				
CIRCLING	1580-1½ 502 (600-1½)	1700-2 622 (700-2)	1720-2¼ 642 (700-2¼)	MIRL Rwy 3-21 REIL Rwy 3, 13, and 21 HIRL Rwy 13-31	