

WAAS CH 70524 W32A	APP CRS 321°	Rwy Idg TDZE Apt Elev	4927 621 623
--	------------------------	-----------------------------	---

RNAV (GPS) RWY 32

TOLEDO EXEC (TDZ)

RNP APCH.

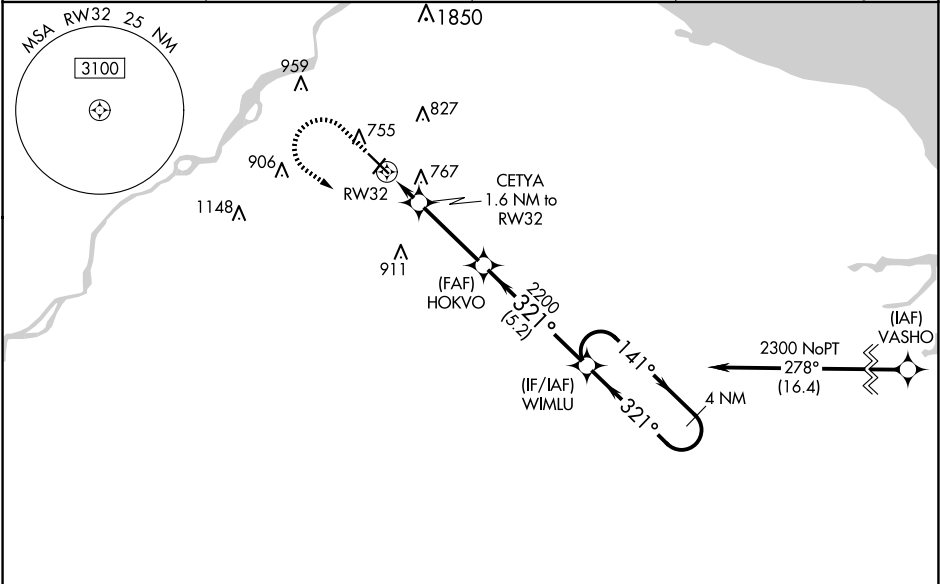
▼

▲

Circling Rwy 14 NA at night. Baro-VNAV NA when using Toledo Express altimeter setting. For uncompensated Baro-VNAV systems, LNAV/VNAV NA below -20°C (-4°F) or above 54°C (130°F). Rwy 32 helicopter visibility reduction below ¾ SM NA. When local altimeter setting not received, use Toledo Express altimeter setting and increase LPV DA to 914, LNAV/VNAV to 1123, increase LPV all Cats visibility ⅛ SM. Increase all MDA 60 feet and increase LNAV Cats C and D and Circling Cat D visibility ¼ SM.

MISSED APPROACH: Climb to 1100 then climbing left turn to 2300 direct WIMLU and hold.

ASOS 121.575	TOLEDO APP CON 126.1 307.0	CLNC DEL 125.6	UNICOM 123.05 (CTAF) 1
------------------------	--------------------------------------	--------------------------	----------------------------------



ELEV 623 **D** TDZE 621

REIL Rwy 4, 14 and 22 1
MIRL Rwy 4-22 and 14-32 1

	1100	2300	WIMLU	
	↑	↻	✧	
* LNAV only.				
		CETYA 1.6 NM to RW32	HOKVO 2200	WIMLU 4 NM Holding Pattern
		1160*	2200	141° → 2300 ← 321°
	1.6 NM	3.2 NM	5.2 NM	GP 3.00° TCH 45
CATEGORY	A	B	C	D
LPV DA	871-¾ 250 (300-¾)			
LNAV/VNAV DA	1080-1⅓ 459 (500-1⅓)			
LNAV MDA	1020-1	399 (400-1)	1020-1⅛	399 (400-1⅛)
C CIRCLING	1080-1 457 (500-1)	1100-1 477 (500-1)	1200-1½ 577 (600-1½)	1320-2¼ 697 (700-2¼)

EC-2, 07 AUG 2025 to 04 SEP 2025

EC-2, 07 AUG 2025 to 04 SEP 2025